

544

PLANO

BRILL

E. J. BRILL LTD • LEIDEN
ANTIQUARIAN BOOKSELLERS

Established 1683

Tel. 071-146646 Telex 39296 Cables: BRILL LEIDEN
Address: P.O. Box 9000 — 2300 PA LEIDEN

The books described in this catalogue are for sale, at the Antiquarian Department of E. J. BRILL, Leiden, and can only be ordered from there. All the books are clothbound and octavosized unless otherwise stated. Prices are in Dutch guilders or florins, to which postage will be added. The appr. rate of exchange is one Gld. = £ 0,25 = \$ 0,28 = FF 2,80, but the correct amount will be specified on our invoice.

Still available:

- | | |
|------------------|--|
| Catalogue No 500 | Localities and dates in Arabic manuscripts. A special catalogue describing 278 items with 120 illustrations. A few copies still available at Gld. 45.— |
| Catalogue No 513 | Egyptology |
| Catalogue No 514 | Oriental Manuscripts (264 Arabic, Persian & Turkish Mss, 124 pp., 99 ill., available at f 30.—) |
| Catalogue No 516 | Judaica |
| Catalogue No 518 | South East Asia (3867 nrs) |
| Catalogue No 519 | Saecula XV-XVII |
| Catalogue No 524 | Philologia Orientalis 2 (f 20.—) |
| Catalogue No 526 | Central and Eastern Europe |
| Catalogue No 527 | Classical Antiquity |
| Catalogue No 529 | Biblical and Near Eastern studies |
| Catalogue No 530 | Arabica |
| Catalogue No 531 | Biology |
| Catalogue No 532 | Iranica 1 |
| Catalogue No 533 | Travels |
| Catalogue No 534 | Caucasica |
| Catalogue No 535 | Iranica 2 |
| Catalogue No 536 | Asia from 60° to 150° |
| Catalogue No 537 | Judaica |
| Catalogue No 538 | Antiquitas |
| Catalogue No 539 | Books and the Orient |
| Catalogue No 540 | Biology |
| Catalogue No 542 | Caucasica 2 |
| Catalogue No 543 | Iranica 3 |
| List No 84-12 | Africa |
| Catalogue No 544 | Plano (paintings/prints/maps) |

In preparation:

- | | |
|------------------|-------------------------|
| Catalogue No 541 | Philologia Orientalis 3 |
| Catalogue No 545 | Libri antiqui |
| Catalogue No 546 | India |
| Catalogue No 547 | Arabica |
| Catalogue No 548 | Malacology |
| Catalogue No 549 | Caucasica 3 |
| Catalogue No 550 | Turcica |

February 1985

Printed in the Netherlands

TABLE OF CONTENTS

	1-19
PORTRAIT PAINTINGS	20-25
PRINTS Europe	26-37
America	38-91
Middle East	92-101
South East Asia	102-151
East Asia	151-155
MAPS World maps	156-206
Europe	207-209
South America	210-215
India	216-259
South East Asia	260-296
Middle East & North Africa	297-324
East Asia	325-336
ADDENDA Prints	337-347
Maps	348-362
Atlases	

After April 30, our telephone
number changes into 312624

A highly interesting collection of Chinese oil paintings on paper, measuring each c. 70 x 55 cm. They represent various generals and statesmen from the 18th century, and bear inscriptions in Chinese and Manchu on the left and right side of each picture, as well as a consecutive numbering in Chinese on the back of each painting.

The overall condition of the paintings is excellent, and the freshness of the original colours has been preserved without any retouching. Two paintings have been mounted on stiff boards, and have therefore no numbering preserved.

The collection consists of two groups of portraits; a group of seven portraits representing Generals and Ministers who took part in the "pacification of the two Chin-ch'uan," and a group of eleven portraits of noblemen from the Turgut tribe. From the numbering on the back of the portraits it would appear that these groups each may have consisted of up to 30 portraits.

The paintings are said by experts to have been copied around the turn of the century from original paintings displayed in the Imperial Palace at Peking, and at least at that time have come to Europe. We could not ascertain the reasons for this copying, or whether the original paintings are still in Peking.

Eight such portraits, executed in a similar way, were acquired in the years 1902-1911 by the Museum für Völkerkunde Berlin-Dahlem, and have been fully described by Veronika Veit in her article 'Die in Deutschland befindlichen Porträts der von Ch'ienlung 1754-55 unterworfenen Ölstenfürsten', Zentralasiatische Studien 4 (Wiesbaden 1970) pp. 199-237, with 8 illustrations.

These portraits are ascribed by Veit to the French Jesuit priest and painter Jean-Denis Attiret (1702-1768), who served at the court of the Emperor Ch'ienlung from 1737 to 1768; the portraits would belong to those commissioned by the Emperor in 1754.

The second group of eleven portraits in our collection bears a striking resemblance, in the manner of executing as well as in the technique of painting and in the pictorial representation, to the Berlin portraits. In this group, various features bespeak the rank of each of the portrayed persons, e.g. the kind of ornament on the caps, earhanger, different kinds of embroidery on the cloak, peacock feathers with one, two or three eyes, etc.

Of the seven portraits of the first group, three are represented in warrior costume, and four in civilian clothing. They are unlike the Berlin portraits, and the mention of the pacification of the two Chin-cu'uan, in the identification at the back of these portraits (see nr. 1), may possibly point to a later date of execution of the originals. That is if with that expression is meant the campaign in Western Szech'uan, which took place in the years 1772-1776.

Below follows a complete listing of the 18 portraits, with a translation of the Chinese text on the front and back side of each painting. The first group of seven paintings has been divided in a group of war-clad figures, originally numbered nr. 2, 3, and 7; and a group of figures in civilian clothing, originally numbered nr. 9, 14, 15, and 17.

Of the second group two paintings (nr. 10 and 17) have been laid down, and no longer preserve their original numbering. For the other paintings this number was originally nr. 2, 5, 7, 8, 13, 14, 16, 17, and 21. Where possible also the Mongolian equivalent of the Chinese names has been supplied.

- 1 Portrait of a helmeted figure, with spiked breast wear, carrying a javelin in the left hand.
On the left side of the picture painted inscription in Manchu, on the back a small label in Chinese, saying: Second portrait of the meritorious ministers of the pacification of the two Chin-ch'uan.
The facial expression is somewhat stylized, the breast portion is impressively depicted.
Executed on rough paper, measuring ca. 70 x 55 cm.
A few minor marginal repairs, some insignificant abrasions, some slight traces of horizontal folds, owing to the fact that the picture was apparently folded up some time. Generally fairly well preserved. f 5000.--
- 2 Ming-liang (1735-1822), First Class Earl of Hsiang-yung, Tartar General of Ch'eng-tu, Deputy Lieutenant-General, Warden of the Marches.
Portrait of a helmeted figure, with spiked breast wear.
On the left and right side of the picture painted inscriptions in Manchu and Chinese, on the back a small label in Chinese, saying: Third portrait of the meritorious ministers of the pacification of the two Chin-ch'uan.
Finely executed portrait with expressive features.
Executed on strong rough paper, measuring ca. 70 x 55 cm.
Lower margin slightly frayed with tiny fragment missing, otherwise very well preserved. f 6000.--
- 3 So-pu-t'eng-pa-erh-chu-erh, Prince of the Blood of the First Degree, originally Husband of an Imperial Princess of the First Rank, Chamberlain of the Imperial Bodyguard, Assistant Military Governor.
Portrait of a helmeted figure, with spiked breast wear.
On the left and right side of the picture painted inscriptions in Manchu and Chinese, on the back a small label in Chinese, saying: Seventh portrait of the two Chin-ch'uan.
The breast portion is impressive, the facial expression is somewhat stylized.
Executed on rough paper, measuring ca. 70 x 55 cm.
Some minor repairs in the upper margin, small abrasion on the left eye and eyebrow, some traces of horizontal folds, owing to the fact that apparently the picture was folded sometime. Generally fairly well preserved. f 3600.--
- 4 E-sen-t'g, Courageous Warrior of the First Degree, Manchu Brigade-General, Captain-General, Assistant Military Governor, Guard at the Ch'ien-Ch'ing gate.
Portrait of a capped figure with peacock feather with one eye, wearing a plain robe of brownish colour with a blue collar.
On the left and right side of the picture painted inscriptions in Manchu and Chinese, on the back a small label in Chinese, saying: Ninth portrait of the meritorious ministers of the pacification of the two Chin-ch'uan.
The breast portion is executed in a robust style. The facial expression is distinctive, although somewhat stylized.
Executed on rough paper, measuring ca. 70 x 55 cm.
Some insignificant fraying in one margin, a few very light abrasions, some traces of horizontal folds, owing to the fact that the picture was apparently rolled up sometime. Generally well preserved. f 4000.--
- 5 P'u-erh-p'u, Fervently Courageous Warrior of the Third Degree, Manchu Brigade-General, Commandant of the Forces, Guard of the Ante-Chamber.
Portrait of a capped figure with peacock feather with one eye, wearing a plain blue robe with pale blue collar.
On the left and right side of the picture painted inscriptions in Manchu and Chinese, on the back a small label in Chinese, saying: Fourteenth portrait of the meritorious ministers of the pacification of the two Chin-ch'uan.
Although the rather massively executed breast portion gives a robust impression, this is somewhat mitigated by the prominently painted folds in the robe. The facial expression is somewhat stylized.



Nr 1



Nr 2



Nr 3



Nr 4



Nr 5



Nr 6

Executed on rough paper, measuring ca. 70 x 55 cm. A few insignificant abrasions and some minor traces of horizontal folds, owing to the fact that the picture was apparently rolled up sometime, otherwise well preserved. f 3900.--

- 6 Hsing-chao, Imperial Clansman, Prince of the Blood of the Sixth Degree, Tartar General of Ching-chou, Commandant of the Forces, Guard at the Ch'ien-Ch'ing gate.
Portrait of a capped figure with peacock feather with one eye, wearing a plain purple robe with a blue collar.
On the left and right side of the picture painted inscriptions in Manchu and Chinese, on the back a small label in Chinese, saying: Fifteenth portrait of the meritorious ministers of the pacification of the two Chin-ch'uan.
The robust impression of the rather massively executed breast portion is nicely counterbalanced by the expressive features of the face.
Executed on rough paper, measuring ca. 70 x 55 cm. Insignificant fraying in a few places, three minor repairs, a few very slight abrasions, some minor traces of horizontal folds, owing to the fact that the picture was apparently folded up sometime, but generally fairly well preserved. f 3700.--
- 7 Ma Piao, Provincial Commander-in-Chief in Hsi-an, Commandant of the Forces.
Portrait of a capped figure with a peacock feather with one eye, wearing a plain grey robe.
On the left and right side of the portrait painted inscriptions in Manchu and Chinese, on the back a small label in Chinese, saying: Seventeenth portrait of the meritorious ministers of the pacification of the two Chin-ch'uan.
Well executed portrait the proportioned features of which are convincing and imposing.
Executed on rough paper, measuring ca. 70 x 55 cm.
Some slight fraying and some minor abrasions, otherwise well preserved. f 4200.--
- 8 Tse-po-ko-to-erh-chi (Sepektorci), Prince of the Blood of the First Degree, of the Turgut tribe.
Portrait of a capped figure, with three-eyed peacock feather, a string of red and yellow beads on a purple robe with richly embroidered front showing a fiery brown dragon surrounded by small decorations in various colours, additional similar embroidery pieces on the shoulders.
On the left and right side of the picture painted inscriptions in Manchu and Chinese, on the back a small label in Chinese, saying: Second portrait of a Turgut.
The breast portion is rather heavy and massive, the crude impression of which is mitigated by the colourful decorations. The facial expression is somewhat stylized.
Executed on rough paper, measuring ca. 70 x 55 cm.
Some abrasions, in two small places on the robe showing the white background, otherwise well preserved with the original colours showing up brightly. f 3600.--
- 9 Pu-yen-ch'u-k'e (Puyengöck), Prince of the Blood of the Third Degree, Khoshoit tribe.
Portrait of a capped figure with peacock feather with two eyes, ear-hanger in the left ear, a string of green and red beads on a dark robe with richly embroidered front showing a fiery brown dragon surrounded by small decorations in various colours.
On the left and right side of the picture painted inscriptions in Manchu and Chinese, on the back a small label in Chinese, saying: Fifth portrait of a Turgut.
The breast portion is executed in a bold shape, the crude impression of which is mitigated by the colourful decorations. The facial expression is rather stylized.
Executed on rough paper, measuring ca. 70 x 55 cm.
Some minute abrasions, occasionally touched up with identical colour; in extreme lower right corner very light flaking, otherwise well preserved. f 3200.--
- 10 Kung-ko, Prince of the Blood of the Third Degree, Khoshoit tribe.
Portrait of a capped figure with peacock feather with two eyes, ear-hanger in the left ear, a string of light purple-brown and green beads on a dark robe with richly embroidered front showing a fiery brown dragon surrounded by small decorations in various colours.
On the left and right side of the picture painted inscriptions in Manchu and Chinese.
The breast portion is executed in a somewhat oversized manner, probably so as to give full scope to the colourful decorations. The facial expression is delicate and distinctive.
Mounted on stiff boards, therefore no numbering in Chinese preserved on the back. Measurement ca. 70 x 55 cm.
The colours stand out less brightly in comparison with the other portraits in the series, but the overall condition of this portrait is very good. f 4700.--
- 11 Mo-men-t'u (Momuntu), Prince of the Fourth Degree, Turgut tribe.
Portrait of a capped figure with peacock feather with two eyes, ear-hanger in the left ear, a string of yellow and red beads on a dark robe with richly embroidered front showing a fiery brown dragon surrounded by small decorations in various colours.
On the left and right side of the picture painted inscriptions in Manchu and Chinese, on the back a small label in Chinese, saying: Seventh portrait of a Turgut.
The breast portion is executed in a somewhat oversized manner, probably so as to give prominence to the colourful decorations. The features are basically stylized but tend to expressiveness.
Executed on rough paper, measuring ca. 70 x 55 cm.
Some flaking affecting the man's cap and small parts of the background, some minor abrasions and light traces of horizontal folds, owing to the fact that the picture was apparently rolled up some time. The freshness of the original colours is well preserved. f 2900.--
- 12 Yeh-le-mu-p'ei-erh (Yeliempel), Prince of the Blood of the Fourth Degree, Khoshoit tribe.
Portrait of a capped figure with peacock feather with two eyes, ear-hanger in the left ear, a string of green and red beads on a dark robe with richly embroidered front showing a fiery brown dragon surrounded by small decorations in various colours.
On the left and right side of the picture painted inscriptions in Manchu and Chinese, on the back a small label in Chinese, saying: Ninth portrait of a Turgut.
The massive breast portion is somewhat neutralized by the colourful decorations. The facial expression shows delicate traces and distinctiveness.
Executed on rough paper, measuring ca. 70 x 55 cm.
Some light abrasions, but generally fairly well preserved with the original colours showing up brightly. f 3900.--

- 13 Ch'i-li-pu (Kiribu), Daidji (Hereditary Noble) of the First Rank, Turgut tribe.
Portrait of a capped figure with peacock feather with two eyes, ear-hanger in the left ear, a string of light purple and green beads on a dark robe with richly embroidered square front showing a blue dragon above which small decorations in various colours.
On the left and right side of the picture painted inscriptions in Manchu and Chinese, on the back a small label in Chinese, saying: Thirteenth portrait of a Turgut.
The breast portion being executed in a somewhat massive style, the colourful decorations are given full prominence. The facial expression is somewhat stylized, yet distinctive.
Executed on rough paper, measuring ca. 70 x 55 cm.
Margins slightly frayed, some abrasions, but generally fairly well preserved, with the colours standing out brightly. f 3500.--
- 14 A-la-k'e-pa (Arakba), Daidji of the First Rank, Turgut tribe.
Portrait of a capped figure with peacock feather with one eye, ear-hanger in the left ear, a string of light purple and green beads on a dark robe with richly embroidered square front showing a fiery green dragon above which small decorations in various colours.
On the left and right side of the picture painted inscriptions in Manchu and Chinese, on the back a small label in Chinese, saying: Fourteenth portrait of a Turgut.
The somewhat massive representation of the breast portion is adequately counterbalanced by the colourful decorations. The facial expression shows delicate traces and distinctiveness.
Executed on rough paper, measuring ca. 70 x 55 cm.
Apart from some insignificant fraying in the left margin and some very slight abrasions, in good condition with the original brightness of the colours well preserved. f 4000.--
- 15 Meng-kun (Mengung), Daidji of the First Rank, Khoshoit tribe.
Portrait of a capped figure with peacock feather with one eye, ear-hanger in the left ear, a string of red and green beads on a dark robe with richly embroidered square front showing a blue-green dragon above which small decorations in various colours.
On the left and right side of the picture painted inscriptions in Manchu and Chinese, on the back a small label in Chinese saying: Sixteenth portrait of a Turgut.
The breast portion is executed in a bold and somewhat massive style, probably so as to allow the colourful decorations to show up more emphatically. The facial expression is basically stylized but tends to show more characteristic features.
Executed on rough paper, measuring ca. 70 x 55 cm.
Lower margin slightly frayed, some light abrasions and minor traces of horizontal folds, owing to the fact that the picture was apparently rolled up some time. Generally fairly well preserved. f 3700.--
- 16 Nuo-hai (Nogai), Daidji of the First Rank, Khoshoit tribe.
Portrait of a capped figure with peacock feather with one eye, ear-hanger in the left ear, a string of red and green beads on a dark robe with richly embroidered square front showing a fiery blue dragon above which small decorations in various colours.
On the left and right side of the picture painted inscriptions in Manchu and Chinese, on the back a small label in Chinese, saying: Seventeenth portrait of a Turgut.
The breast portion being executed in a rather massive way, the colourful decorations are allowed to stand out conspicuously. The facial expression is somewhat stylized.
Executed on rough paper, measuring ca. 70 x 55 cm.
Apart from some light abrasions, fairly well preserved. f 3500.--
- 17 Ts'e-po-k'e-li-pu (Sepocak), Daidji of the First Rank, Turgut tribe.
Portrait of a capped figure with peacock feather with one eye, ear-hanger in the left ear, a string of yellow and red beads on a dark robe with richly embroidered square front showing a blue dragon above which small decorations in various colours.
On the left and right side of the picture painted inscriptions in Manchu and Chinese.
The breast portion is executed in a somewhat massive way, which however gives full prominence to the colourful decorations. The facial expression is rather stylized, but tends to expressiveness.
Mounted on stiff boards, therefore no numbering in Chinese preserved on the back. Measurement ca. 70 x 55 cm.
The colours stand out less brightly in comparison to the other portraits in the series, but the portrait is generally well preserved. f 3600.--
- 18 K'en-tse (Gensi), Daidji of the Fourth Rank, Choros tribe.
Portrait of a capped figure with peacock feather with one eye, ear-hanger in the left ear, a string of green and red beads on a dark robe with richly embroidered square front showing a panther above which small decorations in various colours.
On the left and right side of the picture painted inscriptions in Manchu and Chinese, on the back a small label in Chinese, saying: Twenty-first portrait of a Turgut.
The breast portion is executed in a somewhat massive style, which however does full justice to the colourful decorations. The facial expression is rendered in delicate features of characteristic design.
Executed on rough paper, measuring ca. 70 x 55 cm.
Some fraying and minor abrasions, a few traces of horizontal folds, owing to the fact that apparently the picture was folded some time. Fairly well preserved. f 3000.--



Nr 7



Nr 8



Nr 19

- 19 DURVEN, DIEDERIK, Governor-General of the Netherlands Indies 1729-1732.
- Oil painting on copper, size 329 x 258 mm.
An almost certainly 18th century copy (other examples of which were once known) of the portrait by Hendrik van den Bosch (1732) reproduced in J. de Loos-Haaxman, De Landsverzameling Schilderijen in Batavia (Leiden 1941), afb. 60. On the subject of copies of the portraits of Governors-General see ibidem p. 147ff. Although many contemporary copies of the portraits of the Governors-General were made they are now very rare. The date and provenance of this copy are suggested by the fact that it is a painting on a copper plate, which was the usual medium for paintings made in Indonesia in the 18th century. As a matter of fact, the portraits of the Governors-General remained in Indonesia until the Second World War. They are now in the Rijksmuseum, Amsterdam. As to the character and merit of Durven, it is interesting to note that on account of his bad moral conduct he was the only Governor-General who was removed from office and called back to Holland, where the affair was hushed up. f 4800.--

PRINTS

WESTERN EUROPE

- 20 AZORES. Die Stadt Angra. Engraving 141 x 97 mm showing view from the harbour. (Frankfurt 1686) -Z.945/19- £ 50.--
- 21 NORWAY. Tröngem, in the North of Norway. Engraving by E. Byrne after Dreier. London 1819. Printed area 167 x 217 mm. Slightly foxed. -Z.992/2- £ 110.--
- 22 SWEDEN. Norr-malm Square in Stockholm. Engraved by E. Byrne after Martin, printed area 181 x 215 mm. London 1819. Slightly foxed. -Z.992/4-f £ 85.--
- 23 SWEDEN. View of the Church of Carl Gustaf, and Western division of the Tornea River. Fine engraving 101 x 143 mm by R. Pollard after Martin. London 1818. Slightly foxed. -Z.992/5- £ 90.--
- 24 SWEDEN. View of Ridderholm Place in Stockholm. Fine engraving by E. Byrne, printed area 182 x 214 mm. London 1819. Slightly foxed. -Z.992/1-f £ 90.--
- 25 SWEDEN. Laplanders, having prepared their winter tents upon the Alps between Sweden and Norway. Engraving by R. Pollard after Martin. London 1819. Printed area 178 x 175 mm. Slightly foxed. -Z.992/3- £ 60.--

NORTH AND SOUTH AMERICA

- 26 BRASIL. Die Brasilianer. Bresiliens. Engraving 140 x 97 mm showing Indians massacring each other, (Frankfurt 1686) -Z.945/10- £ 40.--
- 27 CANADA. Die Stadt Quebec. Engraving 139 x 98 mm of a view from the harbour. (Frankfurt 1686) -Z.935/6- £ 75.--
- 28 CANADA. Die Völker Huron genant. Hurons. Engraving 142 x 101 mm of natives in a forest. (Frankfurt 1686) -Z.935/1- £ 45.--
- 29 CARIBBEAN. Die Tabaka-plantzung. Tabaca. Engraving of a tobacco plantation 140 x 99 mm. (Frankfurt 1686) -Z.945/5- £ 45.--
- 30 CARIBBEAN. Die Zubereitung dess Entigs. Indigotoire. Engraving 138 x 99 mm showing an indigo factory. (Frankfurt 1686) -Z.945/4- £ 45.--
- 31 MEXICO. Die Ludtwigs Vestung. P. Louys. Engraving 142 x 102 mm showing town and harbour. (Frankfurt 1686) -Z.945/8- £ 50.--
- 32 PERU. Die Einwohner in Peru. Ples du Perou. Engraving 146 x 103 mm showing a warrior and a priest. (Frankfurt 1686) -Z.945/17- £ 45.--
- 33 PERU. Die Stadt Callao. Engraving 140 x 101 mm with view from the harbour. (Frankfurt 1686) -Z.945/13- £ 50.--
- 34 UNITED STATES. Die Einwohner der Landtschafft Floriden. Peuples de la Floride. Engraving 142 x 108 mm, of a native couple. (Frankfurt 1686) -Z.935/4- £ 40.--
- 35 UNITED STATES. Die Einwohner der Landtschafft Virginea. Peuples de Virginea. Engraving 146 x 109 mm, of a native couple. (Frankfurt 1686) -Z.935/3- £ 40.--
- 36 UNITED STATES. Die Stadt dess H. Augustins in Florida. St. Augus. de Floride. Engraving 142 x 109 mm with view of the harbour. (Frankfurt 1686) -Z.935/5- £ 70.--
- 37 UNITED STATES. Die Stadt Pomejok (Virginia). View of native dwellings with inset showing interior of a cabin. Engraving 147 x 110 mm. (Frankfurt 1686) -Z.935/2- £ 50.--

MIDDLE EAST

This section, comprising items 38 to 91 offers a selection of handsome lithographs of scenes and landscapes of Palestine, Lebanon and Syria, executed after sketches of C.W.M. van de Velde, the great cartographer, who travelled extensively in the area while making one of the best maps of Palestine. These prints were published in his monumental work *Le pays d'Israel*, printed in Paris 1857.

- 38 LEBANON. l'Arrivée à Häsbeiya. Tinted lithograph by Cicéri after C.W.M. van de Velde. Paris 1857. Printed area 244 x 32 mm. -S.64- £ 70.--
- 39 LEBANON. Baalbec. Côté Oriental. Coloured lithograph by Cicéri after C.W.M. van de Velde. Paris 1857. Printed area 224 x 304 mm., a small stain. -S.64- £ 80.--
- 40 LEBANON. Baalbec. Vue Méridionale. Coloured lithograph by Muller after C.W.M. van de Velde. Paris 1857. Printed area 222 x 214 mm., partly foxed. -S.64- £ 80.--
- 41 LEBANON. Bint-Djebail. Tinted lithograph by Jacottet after C.W.M. van de Velde. Paris 1857. Printed area 229 x 314 mm. -S.64- £ 90.--
- 42 LEBANON. Chûte du Torrent de Djezzîn. Tinted lithograph by Terry after C.W.M. van de Velde. Paris 1857. Printed area 252 x 315 mm., some slight foxing. -S.64- £ 75.--
- 43 LEBANON. Djebeah. (Village du Djebel Rihân). Tinted lithograph by Jacottet after C.W.M. van de Velde. Paris 1857. Printed area 235 x 330 mm., a few light stains. -S.64- £ 80.--
- 44 LEBANON. Djisar Kakalyeh. (Pont sur le Leontes). Tinted lithograph by Sabatier after C.W.M. van de Velde. Paris 1857. Printed area 237 x 312 mm., foxed. -S.64- £ 70.--
- 45 LEBANON. El-Bekâa. (La Vallée de Coele Syrie). Coloured lithograph by Muller after C.W.M. van de Velde. Paris 1857. Printed area 235 x 320 mm. -S.64- £ 80.--
- 46 LEBANON. El-nahr Häsbyan (Le Jourdain Supérieur). Tinted lithograph by Sabatier after C.W.M. van de Velde. Paris 1857. Printed area 189 x 296 mm. slightly foxed. -S.64- £ 80.--
- 47 LEBANON. En-Neby Yûnas. Tinted lithograph by Sabatier after C.W.M. van de Velde. Paris 1857. Printed area 214 x 321 mm., slightly foxed. -S.64- £ 70.--
- 48 LEBANON. Forêt dans les hautes régions du Liban. Coloured lithograph by Sabatier after C.W.M. van de Velde. Paris 1857. Printed area 232 x 312 mm. -S.64- £ 70.--
- 49 LEBANON. Gorge du Léontès près du Khatweh. Coloured lithograph by Sabatier after C.W.M. van de Velde. Paris 1857. Printed area 313 x 329 mm. -S.64- £ 80.--
- 50 LEBANON. La grotte de Banias. Source du Jourdain. Coloured lithograph by Jacottet after C.W.M. van de Velde. Paris 1857. Printed area 242 x 327 mm., some slight foxing. -S.64- £ 70.--
- 51 LEBANON. Häsbeiya. Tinted lithograph by Sabatier after C.W.M. van de Velde. Paris 1857. Printed area 227 x 293 mm, slightly foxed. -S.64- £ 75.--
- 52 LEBANON. Kabr Hairan. (Tombeau de Hiram, Roi de Tyr). Coloured lithograph by Laurens after C.W.M. van de Velde. Paris 1857. Printed area 186 x 262 mm., slightly foxed. -S.64- £ 80.--
- 53 LEBANON. Kalât Aissafa. Ruines près de Kefr Hamam. Coloured lithograph by J. Bakof after C.W.M. van de Velde. Paris 1857. Printed area 213 x 307 mm., very slightly foxed. -S.64- £ 80.--
- 54 LEBANON. Kalât Esch-Schekîf. (Le Châtea Belfort des Croisés). Tinted lithograph by Deshayes after C.W.M. van de Velde. Paris 1857. Printed area 235 x 322 mm. -S.64- £ 70.--
- 55 LEBANON. Kalât Hounîn. Tinted lithograph by Sabatier after C.W.M. van de Velde. Paris 1857. Printed area 232 x 320 mm. -S.64- £ 85.--
- 56 LEBANON. Kalât Schemma. Tinted lithograph by Sabatier after C.W.M. van de Velde. Paris 1857. Printed area 231 x 300 mm. -S.64- £ 75.--
- 57 LEBANON. Kalât Tibnin. (Le Châtea Torton des Croisés). Tinted lithograph by Sabatier after C.W.M. van de Velde. Paris 1857. Printed area 230 x 297 mm., foxed. -S.64- £ 70.--
- 58 LEBANON. Kamâa El-Hermel. (Monument dans la plaine de Riblah). Coloured lithograph by Jacottet after C.W.M. van de Velde. Paris 1857. Printed area 205 x 322 mm., partly foxed. -S.64- £ 75.--
- 59 LEBANON. Kefr Hamam. (Environs de Häsbeiya). Coloured lithograph by Sabatier after C.W.M. van de Velde. Paris 1857. Printed area 238 x 318 mm., slightly foxed. -S.64- £ 80.--



Nr 9



Nr 10

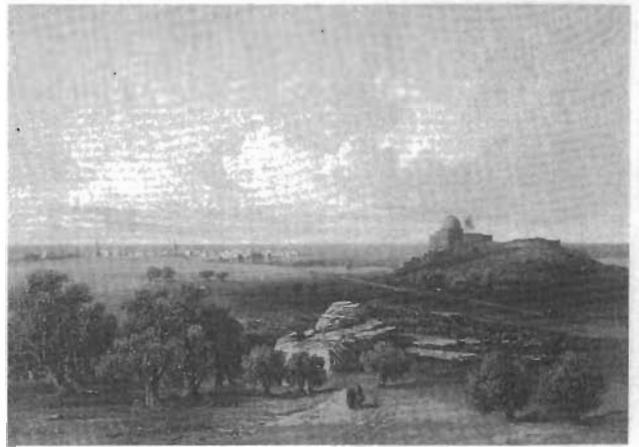


Nr 11

- 60 LEBANON. Le Léontès au dessous de Burghuz. Tinted lithograph by Sabatier after C.W.M. van de Velde. Paris 1857. Printed area 241 x 319 mm. -S.64- f 85.--
- 61 LEBANON. Merj Ahfn. Vallée Alpestre du Liban Septentrional. Tinted lithograph by Terry after C.W.M. van de Velde. Paris 1857. Printed area 243 x 332 mm., foxed. -S.64- f 65.--
- 62 LEBANON. Le mont Hermon. Vu du Khalwet el-Biyad. Coloured lithograph by Sabatier after C.W.M. van de Velde. Paris 1857. Printed area 233 x 318 mm., slightly foxed. -S.64- f 80.--
- 63 LEBANON. Le mont Hermon. Vue prise de Thelthata. Coloured lithograph by Cicéri after C.W.M. van de Velde. Paris 1857. Printed area 235 x 325 mm. -S.64- f 85.--
- 64 LEBANON. Les monts Hermon et Senfn. Vue prise de la crête du Liban (versant oriental). Coloured lithograph by Sabatier after C.W.M. van de Velde. Paris 1857. Printed area 235 x 325 mm., partly foxed. -S.64- f 70.--
- 65 LEBANON. Le Nahr Awly (le Bostrenus). Coloured lithograph by Cicéri after C.W.M. van de Velde. Paris 1857. Printed area 240 x 327 mm., slightly foxed. -S.64- f 80.--
- 66 LEBANON. Le nahr Sanfk près de sa source. Tinted lithograph by Sabatier after C.W.M. van de Velde. Paris 1857. Printed area 23,8 x 332 mm. -S.64- f 70.--
- 67 LEBANON. Ravin du Léontès près de Belât. Tinted lithograph by Sabatier after C.W.M. van de Velde. Paris 1857. Printed area 230 x 318 mm. -S.64- f 80.--
- 68 LEBANON. Ruine près de Tyr (au Sud de la Ville). Coloured lithograph by Freeman after C.W.M. van de Velde. Paris 1857. Printed area 190 x 289 mm. Attractive print. -S.64- f 110.--
- 69 LEBANON. Ruines de Hazour ou Hazireh. Tinted lithograph by Sabatier after C.W.M. van de Velde. Paris 1857. Printed area 181 x 262 mm., very slightly foxed. -S.64- f 80.--
- 70 LEBANON. Ruines de Tyr (l'ancienne Cathédrale, parue S.E. de la Ville). Coloured lithograph by Benoist after C.W.M. van de Velde. Paris 1857. Printed area 190 x 268 mm. Fine. -S.64- f 120.--
- 71 LEBANON. Ruines d'un temple à Belat entre Tyr et Tibnin. Coloured lithograph by Sabatier after C.W.M. van de Velde. Paris 1857. Printed area 233 x 317 mm., slightly foxed. -S.64- f 80.--
- 72 LEBANON. Ruines d'un temple à Hibarÿeh. Coloured lithograph by Daniaud after C.W.M. van de Velde. Paris 1857. Printed area 218 x 297 mm., slightly foxed. -S.64- f 80.--
- 73 LEBANON. Saida (Sidon), vue septentrionale. Coloured lithograph by Jacottet after C.W.M. van de Velde. Paris 1857. Printed area 207 x 304 mm., slightly foxed. -S.64- f 80.--
- 74 LEBANON. Sidon, vue générale prise des Jardins. Tinted lithograph by Jacottet after C.W.M. van de Velde. Paris 1857. Printed area 220 x 308 mm., partly foxed. -S.64- f 85.--
- 75 LEBANON. Sidon, vue méridionale. Coloured lithograph by Cicéri after C.W.M. van de Velde. Paris 1857. Printed area 202 x 288 mm., partly foxed. -S.64- f 85.--
- 76 LEBANON. Site près de Schuwena. (Environs de Hasbeiya). Coloured lithograph by Cicéri after C.W.M. van de Velde. Paris 1857. Printed area 234 x 308 mm., slightly foxed. -S.64- f 80.--
- 77 LEBANON. Sour (Tyre), vue générale. Tinted lithograph by Jacottet after C.W.M. van de Velde. Paris 1857. Printed area 213 x 313 mm. Fine. -S.64- f 110.--
- 78 LEBANON. Sources de l'Adonis a Afka. Coloured lithograph by Terry after C.W.M. van de Velde. Paris 1857. Printed area 322 x 230 mm., partly foxed. -S.64- f 75.--
- 79 LEBANON. Le torrent de Bscharreh. Tinted lithograph by Cicéri after C.W.M. Van de Velde. Paris 1857. Printed area 318 x 255 mm., partly foxed. -S.64- f 75.--
- 80 LEBANON. La vallée du Hâsbany. Vue méridionale prise d'Ibl. Coloured lithograph by Sabatier after C.W.M. van de Velde. Paris 1857. Printed area 243 x 312 mm. -S.64- f 80.--
- 81 PALESTINE. Beisan (Beth-San, Scythopolis). Coloured lithograph by Cicéri after C.W.M. van de Velde. Paris 1857. Printed area 238 x 327 mm., slightly foxed. -L.37- f 80.--
- 82 PALESTINE. Er-Riha, village près du site de Jericho. Coloured lithograph by Sabatier after C.W.M. van de Velde. Paris 1857. Printed area 232 x 306 mm. Foxed. -L.37- f 80.--
- 83 PALESTINE. Jenfn en-Gammim (tribu d'Issachar). Tinted lithograph by Sabatier after C.W.M. van de Velde. Paris 1857. Printed area 223 x 312 mm. -L.37- f 75.--
- 84 PALESTINE. Kalât Djedfn (environs de S. Jean d'Acre). Coloured lithograph by Sabatier after C.W.M. van de Velde. Paris 1857. Printed area 235 x 320 mm., slightly foxed. -L.37- f 90.--
- 85 PALESTINE. Kalat-Karn. Coloured lithograph by Sabatier after C.W.M. van de Velde. Paris 1857. Printed area 234 x 317 mm. Fine. -L.37- f 90.--
- 86 PALESTINE. Le Lac de Tiberiade. La tempête (St. Luc VIII:22-25). Coloured lithograph by Muller after C.W.M. van de Velde. Paris 1857. Printed area 225 x 314 mm. Fine print in dark blue colours. -L.37- f 125.--
- 87 PALESTINE. Ruines à Tantoura (site de l'ancienne ville de Dor). Tinted lithograph by Jacottet after C.W.M. van de Velde. Paris 1857. Printed area 230 x 300 mm., slightly foxed. -L.37- f 75.--
- 88 PALESTINE. Sebustÿeh (Samarie). Tinted lithograph by Jacottet after C.W.M. van de Velde. Paris 1857. Printed area 235 x 315 mm. -L.37-f 80.--
- 89 PALESTINE. Village de Mellia. Coloured lithograph by Sabatier after C.W.M. van de Velde. Paris 1857. Printed area 227 x 322 mm. -L.37- f 80.--
- 90 SYRIA. Esch-Scham. (Damas). Tinted lithograph by Cicéri after C.W.M. van de Velde. Paris 1857. Printed area 248 x 350 mm., some slight foxing. -S.64- f 75.--
- 91 SYRIA. La rivière Barada (l'ancienne Avana). Vue prise près de Dumar. Tinted lithograph by Sabatier after C.W.M. van de Velde. Paris 1857. Printed area 236 x 318 mm., partly foxed. -S.64- f 75.--

SOUTH EAST ASIA

- 92 INDONESIA. Gezigt op den Weg van Kema naar Tondano. Uncoloured lithograph by P. Lauters after a drawing by C.W.M. van de Velde, published by Frans Buffa en Zonen, Amsterdam, 1845. Engraved area: 21 x 30 cm. - On India paper. -R.73- f 150.--
- 93 INDONESIA. - (Island Pontjang Kitjil in the bay of Tapanoeii, West of Sumatra). Coloured lithograph 115 x 182 mm, from Junghuhn's Terugreis, Zaltbommel 1851. -R.50- f 45.--
- 94 INDONESIA. De Krater van den Berg Poeloe-Sari. Uncoloured lithograph by P. Lauters after a drawing by C.W.M. van de Velde, published by Frans Buffa en Zonen, Amsterdam, 1834. Engraved area: 21 x 30 cm. - On India paper. -R.60- f 175.--
- 95 INDONESIA. Reizende Muzikanten - Musiciens Vooyageants. Coloured lithograph by C.W. Mieling, The Hague, 1854-56, after A. van Pers. Engraved area: 28 x 21 cm. -R.38- f 135.--
- 96 INDONESIA. 'Une rue de quartier malais à Macassar'. Tinted lithograph by Thierry, Paris, after L. Le Breton. Mounted. From Dumont d'Urville's Voyage au Pôle Sud et dans l'Océanie (Paris 1846). Mounted. Engraved area 27,5 x 21 cm. -R.73- f 250.--
- 97 INDONESIA. Sigau, Hoofd der Daijakkers. Fine hand-coloured lithograph 19 x 11 cm, drawn on stone by G. Severeys. Circa 1845. -R.70- f 50.--
- 98 INDONESIA. 'Site sur la Côte de Sumatra'. Tinted lithograph by Thierry, Paris, after L. Le Breton. Mounted. From Dumont d'Urville's Voyage au Pôle Sud et dans l'Océanie (Paris 1846). Engraved area 17,3 x 27 cm. (rare). -R.50- f 250.--
- 99 INDONESIA. Tjoeroek Penganten Java. Tinted lithograph by C.W. Mieling (The Hague, ca 1860). Engraved area: 20.5 x 13.5 cm. -R.60- f 75.--

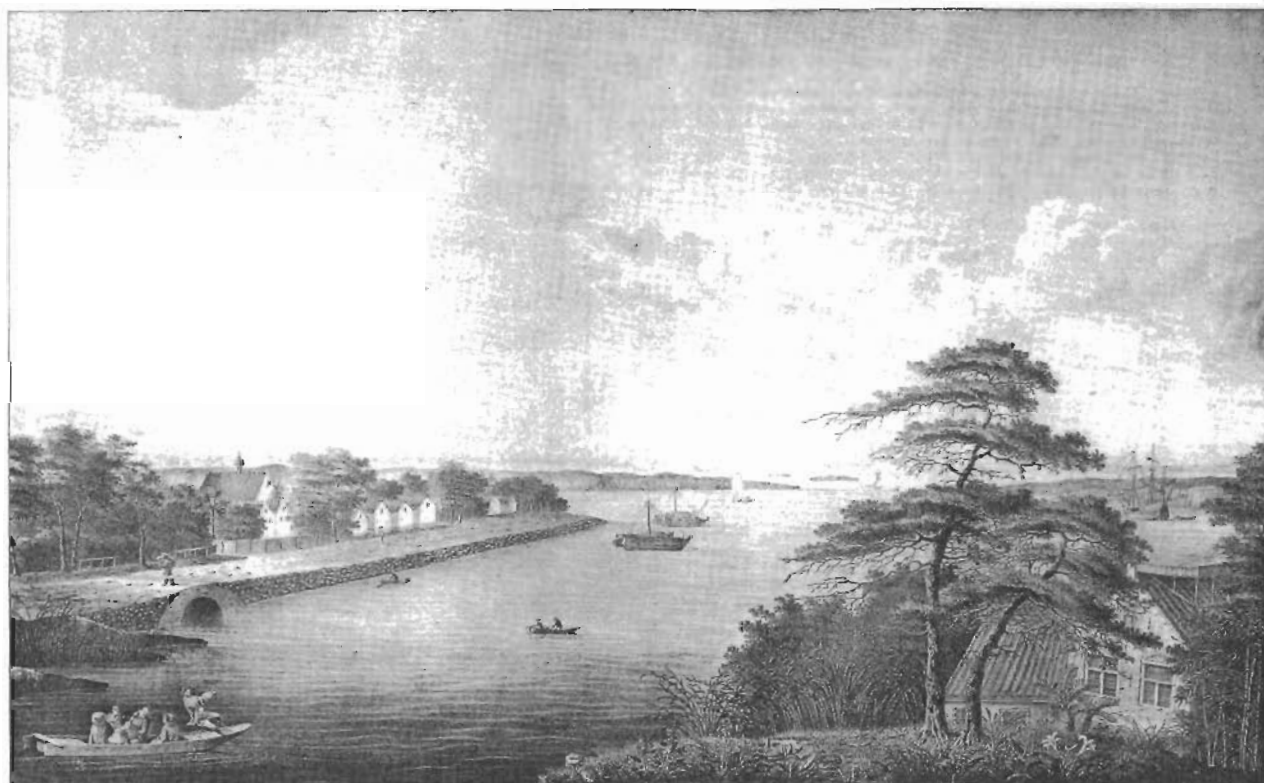


Nr 77



Nr 97

- 100 PHILIPPINES. Parao, a passage boat of Manilla. Steelengraving. (London, ca. 1800). Printed area 15 x 20,5 cm. -Z.551- f 80.--
- 101 PHILIPPINES. Sarambeau, a fishing raft of Manilla. Steelengraving by Heath after Blondela. London, C.G. & I. Robinson, 1798. Printed area 15,3 x 20,8 cm. -Z.551- f 80.--
- INDOCHINA, CENTRAL & EAST ASIA
- 102 CHINA. Champan, a Chinese boat. Steelengraving. (ca. 1800). Printed area 16 x 21 cm. -Z.551- f 80.--
- 103 CHINA. Cité de Nang Hyong Fu, tirée de Nieuhof. J. v. Schley direx. (Ca. 1765). Printed area 17,3 x 25,8 cm. -Pfol.116- f 125.--
- 104 CHINA. Kan Kang Hyen près de Kan Cheu Fu. J.v. Schley direx. View from Nieuhof. (ca. 1765). Printed area 19,1 x 13,8 cm. (slightly waterstained) -Z.552- f 70.--
- 105 CHINA. Plan de Long-men-hien près de la Grande muraille, dependant de Suen hoa fu & Plan d'une partie de la grande muraille, du costé de Yung-ping-fu. J.v. Schley direx. Two views on one sheet. (ca 1765). Printed area 20,4 x 16 cm. -Z.552- f 80.--
- 106 CHINA. Temple de Pau-Lin-Shi tiré de Nieuhof. J.v. Schley direx. (ca. 1765). Printed area 17 x 25,2 cm. -Pfl.118- f 125.--
- 107 CHINA. Ville de Tong Cheu. Pellerinage pour obtenir une année fertile. J.v. Schley direx. Two views from Y. Ides on one sheet. (ca. 1765). Printed area 19,4 x 14 cm. -Z.552- f 80.--
- 108 CHINA. Vusihyen & Hû Chew Fû ou Hou-Tcheou-Fou. J.v. Schley direx. Two Views on one sheet. (ca. 1765). Printed area 21,5 x 14,3 cm. -Z.552- f 80.--
- 109 JAPAN. Japanese boat (rear view). Steelengraving by Heath after Blondela. London, C.G. & I. Robinson, 1798. Printed area 16,4 x 20,8 cm. -Z.551- f 80.--
- 110 JAPAN. Japanese boat (side-view). Steelengraving. (ca. 1800). Printed area 16,1 x 20,8 cm. -Z.551- f 80.--
- 111 JAPAN. Monumentum in memoriam Engelberti Kaempferi et Caroli Petri Thunbergii in horto botanico insulae Dezima cura et sumtibus Ph.Fr. de Siebold positum 1826. Handcoloured lithographed plate showing the tombstone of Kaempfer and Thunberg, illustrating the title-page of Siebold's Flora Japonica, Leiden 1836. Printed area ca. 15 x 18 cm on a folio leaf. (margins slightly torn) -Pfol.123- f 175.--
- PLATES FROM PHILIPP FRANZ VON SIEBOLD'S NIPPON
- The following section, comprising items 112-150 offers a selection of lithographed plates from NIPPON, Archiv zur Beschreibung von Japan und dessen Neben- und Schutzländern, (Leiden 1832-1858), the most outstanding achievement of Philipp Franz von Siebold, whose exhaustive investigations and descriptions of Japan opened the era of Japanese studies on a scientific basis.
- 112 JAPAN. De Behuerschers der Menschen Nin-woo. Lithographed table of the Tulers of Japan by Kô-tching-tschang sinens and H.Ph. Heidemans. Printed area 28,7 x 45,3 cm. (From: Siebold, Nippon. Leiden 1832-58, vol. 111, tab. v) -T.35- f 150.--
- 113 JAPAN. Factory der Nederlanders op Firato (= Hirado). 1609-1641. Fine lithographed view depicting the Dutch trading post on the left, in the middle the bay with ships, to the right a house with two large trees. Printed area 26,6 x 43,1 cm. (From: Siebold, Nippon. Leiden 1832-58) -T.35- f 300.--
- 114 JAPAN. Gereedschappen ter bereiding van de thee. Geraethe zur Bereitung des Thee's. Lithographed plate showing in outline utensils from the preparation of tea. Printed area 24,5 x 21,5 cm. (From: Siebold, Nippon. Leiden 1832-58) -T.35- f 60.--
- 115 JAPAN. Harddravers. Wettrenner. Lithographed print showing six horsemen in gallop. Printed area ca. 15 x 31 cm. (From: Siebold, Nippon. Leiden 1832-1858). Slightly waterstained. -T.35- f 80.--
- 116 JAPAN. Het Japansche Ryk...Das Japanische Reich. Die vorzüglichsten Inseln derselben. Dessen acht Kreise und acht und sechzig Landschaften. Die Neben und Schutzländer. Lithographed geographical table mentioning the names of all areas of Japan in Japanese characters and in Western typography. Printed area 27,6 x 44,3 cm. (From: Siebold, Nippon. Leiden 1832-1858) -T.38- f 100.--
- 117 JAPAN. Jezo & Krafto. Schepen. Schiffe. Lithographed plate showing four rowing-boats with cars. Printed area 27,5 x 22 cm. (From: Siebold, Nippon. Leiden 1832-1858). Some slight foxing. -T.35- f 75.--
- 118 JAPAN. Ko Tching Dschang. Lithographed portrait by Erxleben. Printed area ca. 21 x 18,3 cm. (From: Siebold, Nippon. Leiden 1832-1858). Blank margins slightly foxed. -T.35- f 200.--
- The Chinese clerk Ko Tsching Dschang, an important collaborator of von Siebold, occupied himself seven years with the lithography of the philological section of the work Nippon.
- 119 JAPAN. Krijgslieden in ouden tijd. Krieger aus alter Zeit. Lithographed print showing ancient armed warriors on a bridge, in the background some buildings. Printed area 22,5 x 32,2 cm. (From: Siebold, Nippon. Leiden 1832-1858). Slightly waterstained. -T.35- f 125.--
- 120 JAPAN. Lithographed plate showing subjects from Japanese mythology: a six-armed warrior on a wild boar flanked by birds, a fan, maize-ears, in the foreground three warriors, etc. Printed area 47,7 x 30,8 cm. (From: Siebold, Nippon. Leiden 1832-1858). Blank margins slightly stained and damaged. -T.48- f 180.--
- 121 JAPAN. Lithographed plate showing various kinds of ancient hunting instruments: spears, bows and arrows, daggers, etc. Printed area 47,2 x 31 cm. (From: Siebold, Nippon. Leiden 1832-1858). One blank margin slightly waterstained. -T.35- f 65.--
- 122 JAPAN. Mura-Sjuksja & Krista-Moota. Lithographed plate showing two hunters. Printed area 34,4 x 25 cm. (From: Siebold, Nippon. Leiden 1832-1858) -T.35- f 50.--
- 123 JAPAN. Pantheon von Nippon. Jtsi-zi-kin-lin. Buts-gen-buts-mo. Han-nija-bo-sats. Fuki-sok-bo-sats. Monzju-siri-bo-sats. Tsigo-monzju. Fugen-bo-sats. Tsigo-fugen. Sitsi-zi-monzju. Muzini-bo-sats. Kokuzoo-bo-sats. Fuku-itsiman-kokuuzoo. Lithographed plate showing the 12 deities, their names also in Japanese characters. Printed area 27 x 23 cm. (From: Siebold, Nippon. Leiden 1832-1858, vol. V, tab. x) -T.48- f 75.--
- 124 JAPAN. Pantheon von Nippon. Ku-hoono-mi-da. Lithographed plate representing 9 Buddha-figures with their names in Japanese characters and in Western typography. Printed area 30,5 x 19 cm. (From: Siebold, Nippon. Leiden 1832-1858, vol. V, tab. vii) -T.48- f 75.--
- 125 JAPAN. Pantheon von Nippon. Lithographed plate showing 28 representations of deities, with their names in Japanese characters. Printed area 34,5 x 24,7 cm. (From: Siebold, Nippon, Leiden 1832-1858, vol. V, tab. xxvi) -T.48- f 50.--
- 126 JAPAN. Pantheon von Nippon. Nehanno Sjaka. Lithographed plate showing Shaka on a tier, surrounded by a large group of mourners, trees, and animals, in the heavens above three female deities. Printed area 42,2 x 23,7 cm. (From: Siebold, Nippon. Leiden 1832-1858, vol. V, vi) -T.48- f 140.--
- 127 JAPAN. Pantheon von Nippon. Pién Tsai T'ien Niü. (Sanskrit, D'Anandadâ). Lithographed print in outline representing an eight-armed seated deity on a rock presiding over a procession of people carrying various offerings; in the foreground a cart, a cargo boat, an ox and a horse. Printed area 55 x 32,8 cm. (From: Siebold, Nippon. Leiden 1832-1858). Lower blank margin slightly damaged. -T.48- f 50.--
- 128 JAPAN. Pantheon von Nippon. (Pú kién. Fú Tássé. Pú tsching). Fu-sjoo. Budai-si. Fu-ken. Lithographed plate. Printed area 27 x 21,5 cm. (From: Siebold, Nippon. Leiden 1832-1858, vol. V, tabi. iii) -T.48- f 60.--



- 129 JAPAN. Pantheon von Nippon. Sitsi-Buts-Jakusi. Lithographed plate showing 12 Buddha-figures, with their names in Japanese characters and in Western typography. Printed area 30 x 20,5 cm. (From: Siebold, Nippon. Leiden 1832-1858, vol. V, tab. ix) -T.48- f 75.--
- 130 JAPAN. Pantheon von Nippon. Sjuts' san-no-s'ja-ka. Tan-sjoo-no-s'ja-ka. S'joo-kak'-no-sj'a-ka. Lithographed plate showing the three deities. Printed area 33 x 23 cm. (From: Siebold, Nippon. Leiden 1832-1858, vol. V, tab. v) -T.48- f 60.--
- 131 JAPAN. Pantheon von Nippon. Ta-hoo-nijo-rai. Kon-goo-kaino-dai-nitsi. Meo-kuhan-zats-tsinomida. Go-koo-si-juino-mida. Jama-gosino-nijorai. Tai-zoo-Kaino-dai-nitsi. Man-da-rano-mida. Lithographed plate showing 7 Buddha-figures, with their names also in Japanese characters. Printed area 30,5 x 23 cm. (From: Siebold, Nippon. Leiden 1832-1858, vol. V, tab. vii) -T.48- f 75.--
- 132 JAPAN. Successio imperatorum (Sjōgun) post regni divisionem. lithographed table mentioning the names of the Sjøgun in Japanese characters and in Western typography. Printed area 24,4 x 18,5 cm. (From: Siebold, Nippon. Leiden 1832-58) -T.35- f 100.--
- 133 JAPAN. Thea Sinensis, var. Jap. rugosa. Thea Sinensis, Var. Jap. diffusa. Thea Sinensis, Var. Jap. macrophylla. Lithographed plate showing three varieties of the tea-plant. Uncoloured. Printed area ca. 31 x 24 cm. (From: Siebold, Nippon. Leiden 1832-1858) -T.35- f 85.--
- 134 JAPAN. Thea Sinensis, Linn. Var. Jap. stricta. Lithographed plate by Ae. S. Mulder after Toioske & de Villeneuve. Partially handcoloured. Printed area ca. 35 x 24,5 cm. (From: Siebold, Nippon. Leiden 1832-1858). Slightly waterstained. -T.35- f 165.--
- 135 JAPAN. Zin-mu-ten-woo op zynen zeetogt van Kibi naar Naniha. 663 v. Chr. Lithographed plate showing the arrival of a ship, people waiting on the shore. Printed area 25 x 34,5 cm. (From: Siebold, Nippon. Leiden 1832-1858). Slightly waterstained. -T.35- f 50.--
- 136 KOREA. Koorai. Hōsatsēm. Lithographed portrait of a man by Erxleben after C.H. de Villeneuve. Printed area ca. 21 x 18 cm. (From: Siebold, Nippon. Leiden 1832-1858) -T.50- f 75.--
- 137 KOREA. Koorai. Koopliden en Scheepsvolk. Kaufleute und Schiffsvolk. Lithographed print showing six seated men in a room with open window giving view on a landscape, in the foreground some writing materials. Printed area 26 x 40,5 cm. (From: Siebold, Nippon. Leiden 1832-1858) -T.50- f 130.--
- 138 KOREA. Koorai. Een koopman. Ein Kaufmann. Lithographed portrait of a merchant by I.W. Vlanderen after Toioske. Printed area ca. 20 x 18 cm. (From: Siebold, Nippon. Leiden 1832-1858) -T.50- f 75.--
- 139 KOREA. Koorai. Kumtshōn. Lithographed portrait of a man by Erxleben after C.H. de Villeneuve. Printed area ca. 22 x 17 cm. (From: Siebold, Nippon. Leiden 1832-1858) -T.50- f 75.--
- 140 KOREA. Koorai. Een kustvaarder. Ein Küstenfahrer. Lithographed plate showing a coasting-vessel. Printed area ca. 28 x 25 cm. (From: Siebold, Nippon. Leiden 1832-1858) -T.50- f 75.--
- 141 KOREA. Lithographed plate showing the design of a garment, surrounded by two fans, two mirrors, a comb and a pair of shoes. Printed area 33,5 x 25 cm. (From: Siebold, Nippon. Leiden 1832-1858) -T.50- f 75.--
- 142 KOREA. Lithographed plate showing three statues of deities, a drum, and three vases. Printed area ca. 29 x 24 cm. (From: Siebold, Nippon. Leiden 1832-1858) -T.50- f 60.--
- 143 KOREA. Lithographed plate showing various coins. Captions transliterated. Printed area 34,5 x 25 cm. (From: Siebold, Nippon. Leiden 1832-1858) -T.50- f 75.--
- 144 KOREA. Lithographed plate showing various kinds of head-gear, an embroidered dress, a bracelet, earrings, a handbag, a shoe, an apron. Printed area 47 x 31,2 cm. (From: Siebold, Nippon. Leiden 1832-1858) -T.50- f 75.--
- 145 KOREA. Koorai. Een matroos. Ein Schiffsknecht. Lithographed portrait of a sailor by Erxleben after Toioske. Printed area ca. 23,5 x 17 cm. (From: Siebold, Nippon. Leiden 1832-1858) -T.50- f 75.--
- 146 KOREA. Koorai. Een scheepsjongen. Ein Schiffsjunge. Lithographed portrait of a cabin-boy by Erxleben after Toioske. Printed area ca. 20 x 16 cm. (From: Siebold, Nippon. Leiden 1832-1858) -T.50- f 75.--
- 147 KOREA. Koorai. Een schipper. Ein Schiffer. Lithographed portrait of a skipper by I.W. Vlanderen after Toioske. Printed area ca. 19 x 12,5 cm. (From: Siebold, Nippon. Leiden 1832-1858) -T.50- f 75.--
- 148 KOREA. Koorai. Een visschershuisgezin. Eine Fischerfamilie. Coloured lithograph by Erxleben after Toioske, showing seven persons, four of which seated on the grass and playing a kind a game. Printed area 25,3 x 34,8 cm. (From: Siebold, Nippon. Leiden 1832-1858). Upper blank margin slightly waterstained. -T.50- f 210.--
- 149 KOREA. Scriptura Cooraniana. Lithographed table of the Korean alphabet with 11 vocal characters, 9 consonants and 154 syllables. Printed area 27,6 x 46,8 cm. (From: Siebold, Nippon. Leiden 1832-58, vol. VII, tab. x) -T.52- f 150.--
- 150 SACHALIN. Krafto. Kleedaadje. Kleidungsstücke. Lithographed plate showing articles of dress: a gown, a hat, a handbag, a string of beads, earrings, a boot, etc. Printed area 33 x 22,5 cm. (From: Siebold, Nippon. Leiden 1832-1858). Very slightly waterstained. -T.78- f 75.--
- 151 TARTARY. Het gemeene Tartaarsche paard. Lithograph plate showing a horse with rider in full galop, in the background another horse is being led away. (Amsterdam 1845). Printed area 195 x 265 mm. -T.75- f 65.--



Nr 12



Nr 120



Nr 13



Nr 178 (detail)

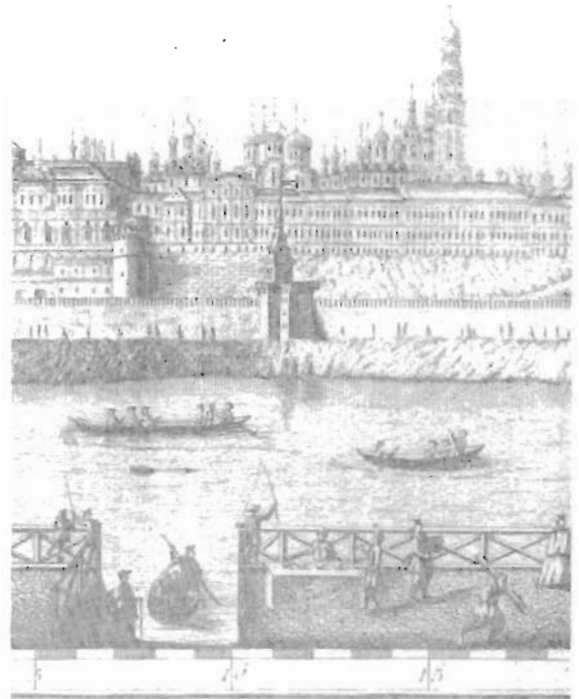
MAPS
WORLD MAPS

- 152 WORLD MAPS. - Diversa orbis terrae visu incidente per coluros tropicorum, ambos ejus polos, ex particularis sphaerae zenith, in planum orthographicam projectio; quibus additae pro variato horizonte omnium positiones. *Worldmap*. Amsterdam, P. Schenk, 1706. Printed area 500 x 570 mm, mounted on thick paper, folded. Contemporary colouring. Folds slightly damaged in two places, one extreme corner torn off, slightly stained. - Koeman III 119 nr. 6 -Pfol.115- £ 150.--
- 153 *WORLDMAP*. - The second *Borgian* map by Diego Ribero, Seville 1529. Reproduced (in full colour) from the original in the Museum of the "Propaganda" in Rome...by W. Griggs. London (ca. 1935). Printed area 58 x 139,5 cm. Laid on canvas, in cylinder. -Z- £ 175.--
- 154 *WORLDMAP*. - The Osaka Shosen Kaisha Track Chart. *Worldmap*, publ. by the O.S.K. Line, Osaka 1934. In colouring, printed area 100 x 150 cm. Inset: Inland sea of Nippon. Stiff varnished paper, with stocks. A few tears in the heading repaired, but a fine copy. -Z- £ 225.--
- 155 *WORLDMAP*. - Karta mestoroženij poleznych iskopaemych mira. (*World map of mineral resources in Russian*, edited by I.S. Ziv). Moscow 1949. Large coloured map 130 x 191 cm, on linen with stocks, scale 1:22.000.000. Varnished, browned surface, torn in places. -Z- £ 175.--

EUROPE

- 156 BALKAN. - Theatrum belli ad Borysthenem Tyram & Danubium fluvios gesti anno 1738. Fine map of the Northern Balkan (Rumania, Bulgaria, and part of the Black Sea), engraved area 480 x 664 mm, on thick paper, folded. St. Petersburg, ca. 1740. -A.15- £ 375.--
- 157 DALMATIA. - Neueste Carte von Dalmatien in II Blätter. With inset: Österreichisch Albanien. In Wien bei Artaria & comp. (ca 1780). In 30 sections on linen. Printed area 46 x 122 cm. -Z.1044- £ 450.--
- 158 EUROPE. - New and accurate map of Europe. London, E. Bowen, (1747). Printed area 34,5 x 42 cm. -M.6- £ 90.--
- 159 FRANCE. - Avenio vulgo Avignon. Attractive town plan from Blaeu's Italian town atlas, in the Mortier reissue (Koeman I 351, 908M). Printed area 41 x 52,5 cm. (Amsterdam 1704) -M.6- £ 275.--
- 160 FRANCE. - Champaigne et Brie &c. Par Mr Samson Geographe du Roy. (Amsterdam, F. de Wit, ca. 1680). Printed area 40 x 50,5 cm. Centerfold strengthened. -M.6- £ 140.--
- 161 FRANCE. - New and accurate map of France with its aquisitions. With insets: City and port of Toulon - Harbour of Brest. London, E. Bowen, (1747). Printed area 35,5 x 43,5 cm. -M.6- £ 110.--
- 162 FRANCE. - Nova Picardiae tabula. (Amsterdam, F. de Wit, ca. 1680). Printed area 39 x 55 cm. Centerfold and two tears repaired. -M.6- £ 150.--
- 163 FRANCE. - New and accurate map of Savoy, Piemont and Montferrat. Exhibiting the present seat of war. With insets: City of Nice - Plan of Coni. London, E. Bowen, (1747). Printed area 34,5 x 42 cm. -M.6- £ 100.--
- 164 GERMANY. - New and accurate map of Germany, divided into its Circles. London, E. Bowen, (1747). Printed area 31,5 x 22 cm. -M.6- £ 75.--
- 165 GERMANY. - New and accurate map of the South East part of Germany. London, E. Bowen, (1747). Printed area 32 x 22 cm. -M.6- £ 75.--
- 166 GERMANY. - New and accurate map of the South West part of Germany. With Inset: Exact plans of Old and New Brisach or Brisach. London, E. Bowen, (1747). Printed area 32 x 22,5 cm. -M.6- £ 65.--
- 167 GERMANY. - Germaniae vulgo Deutschland, tabula comprehensens accuratam & Circulorum Bohemiae Regni ac Universae Helvetiae descriptionem. Amsterdam, I.B. Elwe, 1792. Printed area 48,5 x 49,5 cm. In contemporary colouring; centerfold sl. stained. -M.6- £ 350.--
- 168 GERMANY. - Neue geographische Charte von dem Fürstenthum Ostfriesen und Harlingerland, nach geometrischen und trigonometrischen Vermessungen, welche auf die Astronomischen observationen der Herren Schrötter und Olbers im Herzogthum Bremen gegründet. Aufgenommen und bearbeitet in den Jahren 1798, 1799, 1800, 1801 und 1802 durch den vormaligen Holländischen Artillerie Capitain W. Camp. (No place, ca. 1803). Printed area 39,5 x 44 cm. Engr. by C. van Baarsel. Contemporary colouring. -M.6- £ 160.--
- 169 GREAT BRITAIN. - New and accurate map of South Britain or England and Wales. London, E. Bowen, (1747). Printed area 34 x 42 cm. -M.6- £ 100.--
- 170 GREECE. - New and accurate map of the Islands of the Archipelago, together with the Morea, and the neighbouring countries in Greece &c. London, E. Bowen, (1747). Printed area 34,5 x 42,5 cm. -U.86- £ 110.--
- 171 HUNGARY. - Regni Hungariae et regionum quae ei quondam fuere unitae... maximaeq partis Danubii fluminis novissima delineatio. Amsterdam, F. de Wit, 1688. Printed area 49,5 x 87,5 cm. Torn or creased in three folds; lower margin very short; sl. shabby. -M.6- £ 250.--
- 172 HUNGARY. - New and accurate map of the Kingdom of Hungary and Principality of Transilvania with the bordering countries. London, E. Bowen, (1747). Printed area 34,5 x 41,5 cm. Creased. -M.6- £ 110.--
- 173 HUNGARY. - Le Royaume de Hongrie et les estats qui ont esté unis à sa couronne. Amsterdam, I.B. Elwe, 1792. Printed area 42,5 x 55 cm. In contemporary colouring. -M.6- £ 250.--
- 174 IRELAND. - New and accurate map of Ireland. London, E. Bowen, (1747). Printed area 32 x 22 cm. -M.6- £ 70.--
- 175 ITALY. - Totius Italiae tabula, per Nicolaum Visscher. (Amsterdam, ca. 1700). Printed area 45,5 x 55 cm. Contemporary colouring. In lower left corner inset with dedication to Cosimo III and Medici coat of arms. Slight tear. Margins frayed. -M.6- £ 125.--
- 176 ITALY. - New and accurate map of Italy. With two insets depicting eruptions of Aetna and Vesuvius. London, E. Bowen, (1747). Printed area 31,5 x 22 cm. -M.6- £ 80.--
- 177 ITALY. - New and accurate map of the Northern parts of Italy. With inset: A draught of the Road of Leghorn (Livorno). London, E. Bowen, (1747). Printed area 32 x 22,5 cm. -M.6- £ 55.--
- 178 ITALY. - Bononia docet mater studiorum... Fine plan of Bologna from Blaeu's Italian town atlas, in the Mortier reissue (Amsterdam 1704, Koeman I 350, 861M). Engraved area 51 x 56,5 cm. Excellent condition. -M.6- £ 320.--
- 179 ITALY. - New and accurate map of the Kingdoms of Naples and Sicily. London, E. Bowen, (1747). Printed area 32 x 22 cm. Part torn from margin. -M.6- £ 60.--
- 180 ITALY. - Le Royaume de Naples divisé en douze provinces, par Samson. Corrigée après les nouvelles observations du Sr d'Anville et autres Géographes. Amsterdam, I.B. Elwe, 1792. Printed area 44 x 54 cm. In contemporary colouring. -M.6- £ 280.--
- 181 ITALY. - Fine view of the town of Verrua from Blaeu's Italian town atlas, Amsterdam 1682 (Koeman I 344, B1. 76-54). Printed area 43 x 61,5 cm. Two small tears, one tear repaired, corners sl. discoloured, but a good impression. -M.6- £ 125.--
- 182 NETHERLANDS. - Plan of S. Geertruydenberg. (17th century). Printed area 15,3 x 23,1 cm. Part of printed text on verso. -M.6- £ 125.--
- 183 NETHERLANDS. - Tooneel des tegenwoordigen oorlogs, aan de grenzen der Verenigde en Oostenrijksche Nederlanden, met een gedeelte van Frankrijk &c. Amsterdam, D.M. Langeveld, 1794. Printed area 29,5 x 46 cm. Engraved by G. van Baarsel. Contemporary colouring. One corner slightly foxed. -M.6- £ 100.--
- 184 NETHERLANDS. - Kaarte der eilanden Noordbeveland, Wolphartsdyk en Oostbeveland op ordre van zyne Hoogheid W.C.H. Friso... meetkundig opgenomen 1751, door de ingenieurs D.W.C. Hartinga en A. Hartinga. Amsterdam, I. Tirion, 1753. Soldered map. Printed area 30,2 x 37,8 cm. Contemporary colouring. Slightly stained. -Kocman II 80 no. 38. -Z.550- £ 125.--

- 185 NETHERLANDS. - Carte nouvelle des Pays Bas catholiques (i.e. Belgium) divisés en Autrichiens, François et Hollandois. Amsterdam, I.B. Elwe, 1792. Printed area 52 x 61 cm. In contemporary colouring. Sl. soiled, very short margins. -M.6- £ 275.--
- 186 NETHERLANDS. - Kaarte van Schouwen en Duiveland, op ordre van zyne Hoogheid W.C.H. Friso...meetkundig opgenomen, anno 1752, door de ingenieurs D.W. Carel en Anth. Hattinga. Amsterdam, I. Tirion, 1753. Folded map. Printed area 32 x 61,4 cm. Contemporary colouring. Slightly stained. - Koeman II 80 No. 36 -2.550c- £ 150.--
- 187 NETHERLANDS. - Nieuwe kaart van het eiland Tholen, Nieuw Vosmaar en Phi-lipland, opgenomen door W.T. Hattinga in den jare 1744. Amsterdam, I. Tirion, 1753. Folded map. Printed area 30,5 x 38,5 cm. Contemporary colouring. A minor tear. - Koeman II 80, No. 39 -2.550a- £ 125.--
- 188 NETHERLANDS. - Kaarte van de provincie Zeeland en derselver stroomen naar de nieuwste waarnemingen. Amsterdam, I. Covens & Zoon, (ca. 1778-1794). Printed area 46,8 x 51 cm. Contemporary outline colouring. Lower left corner slightly waterstained. - Not in Koeman -M.6- £ 300.--
- 189 NETHERLANDS. - Kaart van het eiland Zuidbeveland op ordre van Z.D.H. W.C.H. Friso...meetkundig opgenomen door W.T. Hattinga. Amsterdam, I. Tirion, 1753. Folded map. Printed area 32,5 x 61,7 cm. Contemporary hand-colouring. - Koeman II 80 No. 37 -2.550b- £ 150.--
- 190 POLAND. - New and accurate map of Poland, Lithuania &c. divided into it's Palatinats. London, E. Bowen, (1747). Printed area 34,5 x 42,5 cm. Marginal tear. -M.6- £ 110.--
- 191 POLAND. - Poland with its dismember'd provinces. By Thos. Kitchin. London 1784. Engraved map, folded, printed area 41 x 50 cm. -A.60- £ 125.--
- 192 POLAND. - La Pologne, divisée en Royaume de Pologne et les etats y appartenans la Pologne Prussienne Autrichienne & Russienne. Amsterdam, I.B. Elwe, (1792). Printed area 48 x 60 cm. In contemporary colouring. -M.6- £ 300.--
- 193 PORTUGAL. - New and accurate map of Portugal. London, E. Bowen, (1747). Printed area 31,5 x 22 cm. -M.6- £ 70.--
- 194 RUSSIA. - Charte der Kriegs Operationen an Donn und Dnieper Ihro Russisch Keyserl. Maiest. glorieusen Armeen anno 1736. Map of Southern Russia, engraved area 382 x 453 mm. St. Petersburg, ca. 1740. Folded. -A.80- £ 220.--
- 195 RUSSIA. - Charte derer von der Russisch-Keyser. Armee im Jahr 1736 zwischen und an dem Dnieper und Donn wieder die Turcken und Tartarn sieg-reich unternommenen Kriegs-Operationen. Large map of Southern Russia (Poland, Ukraine, Crimea), engraved area 595 x 761 mm, in two sections, folded. Russia, ca. 1740. -A.80- £ 425.--
- 196 RUSSIA. - New and accurate map of Moscovy or Russia in Europe. London, E. Bowen, (1747). Printed area 32 x 22 cm. -A.80- £ 70.--
- 197 RUSSIA. - Plan Carstwujschego Grada Moskwy s pokazaniem ležazščich měst na tritcat' verst v okrug. Fine map of the country surrounding Moscow, with delicate shading for woodland, cultivated areas, and marshland, and with a view of Moscow after M.M. Machaev measuring ca. 165 x 545 mm. Total engraved area 761 x 564 mm. The view has the legend: Vid Kremlja iz Zamoskvorčč'ja meždu Kamennym i Živym Mostom k Poludnju. Undated, ca. 1740. In excellent condition, folded. -A.80- £ 675.--
- 198 RUSSIA. - New and accurate map of the whole Russian Empire, as contained both in Europe and Asia. London, E. Bowen, (1747). Printed area 35 x 46,5 cm. -A.80- £ 130.--
- 199 SCOTLAND. - New and accurate map of Scotland or North Britain. With inset: Shetland Islands. London, E. Bowen, (1747). Printed area 42,5 x 35. Tear of 14 cm. in lower part of map, small tears in margin. -M.6- £ 90.--
- 200 SERBIA. - Generalkarte der Vojvodschafft Serbien und des Temoscher Banats, dann der vier Gränzregimenten Peterwardeiner, Deutsch-Banater, Illyrisch-Banater und Roman-Banater, endlich des Titler Gränz-Bataillons. In hohen Auftrage Sr. Excellenz des k.k. Herrn Feldmarschall-Lieutenants Grafen Coronini-Cronberg nach officiellen Quellen reducirt und gezeichnet von E. von Friedberg im Jahre 1853. Fine folding map in 36 compartments mounted on linen, printed area 87 x 131 cm, scale 1:280.000. In cardboard slipcase with heraldic bookplate of Anton Graf von Pergen. -vtr 1- £ 350.--
- 201 SWEDEN. - Carte des paroisses de Carl Gustaf et de Neder Tornea, en Gouvernement de Westrobotnie (Sweden). Dessinée par C.P. Hallström. London 1817. Printed area 32,5 x 22,5 cm. -pfol.22- £ 60.--
- 202 SWEDEN. - Map of the South of Sweden. From Clarke's Travels, 1819. Printed area 28 x 24 cm. Slightly foxed. -pfol.34- £ 60.--
- 203 SWEDEN. - Plan of Trollhaetta showing the canal and sluices (Sweden). London 1818. Engraved area 13 x 32 cm. -pfol.25- £ 40.--
- 204 SWEDEN. - The Wener Sea (Sweden), acc. to astronomical observations and measurements made on the ice, from the original chart of Marelius. London 1817. Printed area 28,5 x 24 cm. Slightly foxed. -pfol.24- £ 65.--
- 205 SWITZERLAND. - Helveticorum reipublicae cantones xiii; ut et faederata Rhaetia; quique iis socii, ac subditi; adjunctis una comitatibus Valle-siae et Neocomi, per G. Vulk. (Amsterdam, ca. 1700). Engraved area 490 x 575 mm. Contemporary handcolouring. A slight tear in the fold. Damaged in two places with loss of small printed area. - Koeman, Atl. Noerl. III, 138 No. 39 -M.6- £ 100.--
- 206 SWITZERLAND. - New and accurate map of Switzerland. With inset: A new plan of the City of Geneva, with references. London, E. Bowen, (1747). Printed area 32 x 22,5 cm. -M.6- £ 80.--
- SOUTH AMERICA
- 207 SOUTH AMERICA. - Karte von Süd-Amerika in 6 Blättern 1:7.500.000 aus Stiellers Handatlas (9. Aufl.). Entworfen von A. Petermann. Bearb. von H. HABENICHT und H. SALZMANN. Sonderausgabe aufgezogen in Buchform mit Namen-verzeichnis. N.d. (96 (Register) p., 6 sheets mounted on one thick cloth-protected sheet) -M.65- in box £ 68.--
- 208 SURINAM. - Kaart van Suriname, schaal 1:1.125.000, met alfabetische registers. Amsterdam (ca 1905) (6 p.). Printed area 45 x 35 cm. coloured. -M.75- pap. £ 45.--
- 209 SURINAM. - Kaart van de rivier de Suriname, door G.P.H. Zimmerman, Officier der Infanterie. Schaal 1:150.000. Amsterdam 1877. Coloured map 100 x 64 cm with 3 insets, edges soiled. -JP 3113- £ 75.--
- INDIA
- 210 INDIA. - City of Colombo. Ceylon Survey Dept. Scale 16 chains to an inch. Colombo 1934. 401 x 221 ins. 36 sections on linen. -JP 3114- £ 155.--
- 211 INDIA. - Nouvelle carte de l'Inde, pour suivre les opérations militaires dans les possessions anglaise. In the margins: Notice historique et géographique. Folding coloured map in cover, with 2 insets: 1 New Delhi; 2 Carte d'assemblage, etc. With échelle métrique et Lieux communes de France 25 = 1 degré. 33 x 38 cm. Publ. par A. Taride, Paris (ca 1900) -Q.20- £ 70.--
- 212 INDIA. - Karte der britischen Besitzungen in Ost-Indien (= British India) mit einer Uebers. der Zeitfolge ihrer Erwerbung (Coloured inset). Folding map with coloured frontiers. 50 x 41 cm. Deutsche geogr. Meilen 15 = 1 Grad; Englische Meilen (Statute Miles) 69,1 = 1 Grad; Indische Kos oder Jodjana 40 = 1 Grad. With Legenda. Gestochen von G. Wirsing in München 1856. Berlin 1857. (Aus Kiepert's Neuem Handatlas nr 29) -Q.20- £ 85.--
- 213 INDIA. - "A sketch of the Indian Empire; exhibiting the British possessions and their dependencies, in military divisions; with the stations of the troops, and the strength of the armies, according to the latest returns. Note.-The stations and strength of the armies are stated in a separate paper. W. Leach del. inaevit - Indian Board." Fine coloured manuscript map, 97 x 93 cm. in 16 sections on linen, undated but ca. 1830. In box (missing top lid) with morocco label lettered Military Map of India. The paper with statistics may have been glued onto a blank section of the map, but is now missing. -Z.720- £ 1000.--



Между Каменнымъ и живымъ

Nr 197 (detail)



Nr 145



Nr 14



Nr 232 (detail)

- 214 INDIA. - Map of the Dominions of Mysoor at the death of Chick Deo Raja Wadayar in 1704, by Lieut. Col. Mackenzie. Folding coloured map with explanations. Printed area 34 x 32 cm. Scale of miles. Cooper sculpt. London 1810. -Z.70- pap. f 160.--
- 215 INDIA. - Illustrative of the history of the life & times of Hyder Ally Khan, & his descendants; exhibiting the utmost extent of the Mysoore Dominions under that Family; and the principal places connected with the transactions of that period down to 1799. Laid down from the late surveys of Mysore, &c. by C. Mackenzie, Madras 1808. Folding map with coloured outlines. Printed area 50 x 51 cm. Scale in British Miles. London 1810. -Pfol.71- pap. f 320.--

SOUTH EAST ASIA

- 216 AUSTRALIA. - Facsimile coloured folding map of "Zuidland" (dated 1618), from Heeres: The Part borne by the Dutch in the discovery of Australia (1899). Printed area 33 x 51 cm. -pfol.111- pap. f 35.--
- 217 AUSTRALIA. - Facsimile coloured folding map of the Malayan Archipel & Hollandia Nova (dated ± 1700), from Heeres: The Part borne by the Dutch in the discovery of Australia (1899). Printed area 49 x 72 cm. -pfol.112- pap. f 55.--
- 218 INDONESIA. - AMBON. (Verbeek, R.D.M.) Geologische Beschrijving van Ambon. (ca 1900). Collection of five plates showing geological formations and a groundplan of Ambon with buildings damaged by the earthquake of 1898. Printed area 36 x 63 cm. (Bijlage Kaart II-VI) -pfol.83- f 100.--
- 219 INDONESIA. - AMBON. Geologische kaart van Ambon. Schaal 1:100.000. Topografisch opgenomen door W. van den Bos. Geologisch bewerkt door R.D.M. Verbeek en M. Koperberg in 1898. Coloured map. Printed area 36,2 x 55 cm. (Geol. Beschr. van Ambon, Kaart No. 1) - Cf. Cat. Kol. Bibl. 742- pfol.1- f 100.--
- 220 INDONESIA. - AMBON. Geologische kaart van Leitimor, geologisch bewerkt door Dr. R.D.M. Verbeek. Topografisch opgenomen door W. van den Bos in 1898. 'a-Gravenhage, Topografische Inrichting. Coloured map in 6 sheets (incl. title-leaf) each measuring ca. 53,5 x 41 cm. Scale 1:200.000. (Geol. Beschr. van Ambon Kaart II, Blad 1 - 6) (left margins torn and slightly damaged). - Cf. Cat. Kol. Bibl. 742 -pfol.84- f 150.--
- 221 INDONESIA. - AMBON. Top van den Goenoeng Nona. Schaal 1:10.000. Geological coloured map 21,5 x 20,8 cm. (ca 1900)(From: Verbeek, Geol. Beschr. Ambon, Kaart No. III) -pfol.82- f 50.--
- 222 INDONESIA. - Contour drawing of the isles Bali & Lombok, district frontiers marked, with numbering. On paper (photocopy?). Size 64 x 27 cm. 1939. -pfol.2- f 40.--
- 223 INDONESIA. - (Island of Banca), by James Horsburgh. As an accompaniment to the Book of Directions For Navigating, to, from, & in the East Indies (to Dir. of the United East India Company). Folding map with legenda. Engraved by J. Bateman. Publ. by J. Horsburgh, 1819. Printed area 96 x 65 cm. No scale. London 1833. -pfol.74- pap. f 350.--
A fine chart in excellent condition. Showing also a part of the island of Sumatra.
- 224 INDONESIA. - Banjermasing, Martapoera en een gedeelte der Lawut-landen. With insets: Goenong Pamaton & Goenong Taga, by S. Müller. Folding map. Printed area 35 x 27 cm. Scale: Geogr. miles, 15 = 1°. Leiden (1845) (corner dampst.) -pfol.73- pap. f 70.--
- 225 INDONESIA. - Plan van den zuidingang der Straat Banka. Plan van de Reede van Muntok. Lithographed maps on one sheet. Printed area 21,8 x 24,3 and 21,8 x 22,3 cm. Above these a small view 'Gezigt van Muntok', ca. 7,5 x 37,5 cm. (From: Siebold, Nippon. Leiden 1832-1854) -R.50- f 175.--
- 226 INDONESIA. - Het eiland Banka. 1819. (With inset): De rivier van Palembang. 1821. Lithographed map. Printed area 31,3 x 51,3 cm. (From: Siebold Nippon. Leiden 1832-1854) -R.50- f 150.--
- 227 INDONESIA. - Kaart van de wegen naar de Bataksche Hoogvlakte. Blue print (ed plan) of the Deli Spoorweg Mij. With: Toelichting. Scale 1:100.000. 100 x 90 cm. A few blots. -pfol.90- pap. f 60.--
- 228 INDONESIA. - Plan de Batavia. Table des renvois du plan. Ca 1696. Printed area 21 x 28 cm. -pfol.18- f 70.--
- 229 INDONESIA. - La rade de Batavia, faite sur les observations des plus habiles pilotes. Leiden, P. vander AA, (ca 1713). Fine copy with large margin, printed area 16 x 16 cm. -pfol.15- f 100.--
- 230 INDONESIA. - Plan de la ville et du chateau de Batavia. (Paris) 1750. Printed area 21,5 x 29,5 cm. -pfol.19- f 80.--
- 231 INDONESIA. - Carte des environs de Batavia, tirée des Hollandais. (Paris 1764). Printed area 21 x 16,5 cm. -pfol.10- f 65.--
- 232 INDONESIA. - Overzichtskaart der Wester-Afdeeling van Borneo. Fine manuscript map on linen by H.N. Stuart, dated 1891, 58 x 66,5 cm, in blue ink, lettering in black, coloured outlines, within frame. Added are two maps in the same hand on linen, 36 x 36 cm and 45 x 29 cm, of Sambas and Montrado, and Sambas-Mempawah-Landak-Pontijanak. The large map is scale 1:1000.000, the smaller ones scale 1:500.000. Folded, in halfcloth folder with label in manuscript lettering. -Z.994- f 625.--
- 233 INDONESIA. - Kaart van het eiland Borneo, behorende bij In Centraal Borneo, Reis van Pontianak naar Samarinda, door A.W. Nieuwenhuis. Schaal 1:2.000.000. Leiden 1900. 74,5 x 35 cm, in pocket. -R.70- f 35.--
- 234 INDONESIA. - Schetskaart van een deel van Zuid-West-Celebes. Folding coloured map. With Legenda. 82 x 60 cm. Scale 1:200.000. Top. Bureau, Batavia 1905. -pfol.95- pap. f 60.--
- 235 INDONESIA. - Schetskaart van een deel van Noord- & Midden Celebes. Folding coloured map, 12 sections on 2 leaves. With legenda. 133 x 88 cm. Scale 1:5.000.000. A few holes. With a inset: Een gedeelte van Celebes. Scale 1:5.000.000. Topogr. Inrichting, bijgewerkt t/m Maart 1919. Batavia 1919. -pfol.96- set pap. f 350.--
- 236 INDONESIA. - Overzichtskaart van het eiland Celebes. Folding coloured map (repaired), with Legenda. 84 x 62 cm. Scale 1:1.250.000. With 1 inset: Sangiheen Talaud-Eilanden. Scale 1:2.500.000. Reprod. Bedrijf Top. Dienst, Weltevreden 1927. -pfol.99- pap. f 100.--
- 237 INDONESIA. - Overzichtskaart van het terrein voor de te houden manoeuvres in Sept. 1917. (Cheribon, on Java). Folding coloured map, with Legenda, on linen. 41 x 27 cm. Scale 1:500.000. -pfol.92- f 60.--
- 238 INDONESIA. - Voorlopige schetskaart van het eiland Halmahera en onliggende eilanden. Folding coloured map in 12 sections on 2 leaves. With Legenda & Administr. Indeeling. 142 x 79 cm. Scale 1:300.000. Topogr. Inrichting, Batavia 1918. A few holes, but good copy. -pfol.107- set pap. f 275.--
- 239 INDONESIA. - Idjen Hoogland en Bali. Met Legenda/Idjen Highland and Bali. With Key. Uitg. van de Kon. Ver. Java Motor Club, Semarang. Reproductie Topografische dienst/Reproduced by Topographical Service. Batavia 1932. Fold. coloured map, scale 1:250.000, size 94 x 68 cm. (dustsoiled). The copy of Dr. Dr. Malte v. Kühlewein. -pfol.32- pap. f 80.--
- 240 INDONESIA. - Voorlopige staatkundige ordening van Indonesië. Folding coloured map with Legenda (in Dutch). 31 x 85 cm. Scale: 1:6.000.000. Geogr. Inst. v.d. Top. Dienst, Batavia 1948. -pfol.93- pap. f 80.--
- 241 INDONESIA. - Etappe kaart van Java en Madoera (coloured in white and brown). Met verklaring en teekens en verkortingen, alsmede Wijzer van de onderlinge afstanden van hoofdplaatsen en residentieën op 't eiland Java. Door W.J. HAVENGA en G.B. HOOLJER. In upper margin: Kaartje van telegraaflijnen en kantoren op Java. 1878. 64 sections of 20 x 14,5 cm. Scale 1:500.000. On linen. in 4 parts. -JP 3114- f 250.--
- 242 INDONESIA. Overzichtskaart van de Residentie Kêdoe (Java). Coloured map, with Legenda, scale 1:250.000. With inset: Afstandswijzerkaart, scale 1:600.000. Size 63 x 49 cm. Topografische Inrichting, Batavia 1915. Folds and tears repaired. The copy of Malte von Kühlewein. -pfol.7-pap.f 90.--

- 243 **INDONESIA.** - Manuscript map of district Kedoe on Java, in colours, auto-routes marked. With inset in colours. Scale 1:250.000. On paper, size 39 x 49 cm. (1927) -pfol.3- f 95.--
- 244 **INDONESIA.** - Overzichtskaart van de Afdeling Lombok (behoort tot de Res. Bali & Lombok). Coloured fold. map, with Legenda, scale 1:200.000. Reproductiebedrijf Topographische Dienst, Wettevreden 1908 (herdruk 1927). Size 55 x 47 cm. The copy used by Dr. Malte v. Kühlewein. -pfol.11- pap. f 55.--
- 245 **INDONESIA.** - Eastern Islands or Malay Archipelago. Engraved by J. & C. Walker. Printed area 32 x 40½ cm. No scale. London (ca 1840). Left margin shaved. -pfol.77- pap. f 90.--
- 246 **INDONESIA.** - Nederl. Oostindië met de staanplaatsen der Zendingen. Rotterdam, Mensing & van Westreenen, 1823. Lithographed map. Printed area 335 x 454 mm. Some geographical names underlined. Left blank margin damaged. -pfol.122- f 75.--
- 247 **INDONESIA.** - Kaart van Nederlandsch Oost-Indië. Naar de nieuwste bronnen bewerkt, onder toezicht van I. Dornseiffen, door E. de Geest. 1878. Scale 1:1.800.000. Ca 205 x 90 cm, on linen, but cut in 24 sections. 5 insets. In portfolio. -JP 3114- f 185.--
- 248 **INDONESIA.** - Geologische (historische - staatkundige) kaart van het eiland Nias, schaal 1:400.000. Three coloured maps 33,5 x 28,5 cm from Schröder 's Nias, Leiden 1917. Folded. -Z.946- set f 35.--
- 249 **INDONESIA.** - Bladwijzer voor de topographische kaart van de Padangsche Beneden- en Bovenlanden. With Legenda. Batavia 1899. Scale 1:600.000, printed area 69 x 51 cm. In 12 sections on linen. (crinkled) -pfol.12- f 76.--
- 250 **INDONESIA.** - Kleine Soenda-eilanden en aangrenzende vaarwaters. Blad I. Samengesteld naar opnemingen tusschen 1886 en 1919. Diepten en Berghoogten in Meters. Uitg. in Mei 1909 door het Ministerie van Marine, Afd. Hydrographie, 's-Gravenhage. Hernieuwde uitg. 1928. Bijgewerkt in 1937 en 1939 te Batavia. Met 4 kompas-rozen en 1 inset. Scale 1:500.000, size 90 x 70 cm. Fold. map. -pfol.16- pap. f 90.--
- 251 **INDONESIA.** - Kleine Soenda-eilanden. Straat Atlas. Opgenomen in 1903-1906 door Hr. Ms. Opnemingsvaartuig "van Gogh". Uitg. door het Ministerie van Marine, Afd. Hydrographie, 's-Gravenhage 1908. Hernieuwde uitg. 1928. Bijgewerkt Bat. Dept. Marine 1939. Met 4 kompas-rozen. Scale 1:200.000. 2 insets: Oetok van om de ZZO en Dodo om de ZW. Size 66 x 70 cm. Folding map. -pfol.28- pap. f 100.--
- 252 **INDONESIA.** - Kleine Soenda-eilanden. Straat Bali. Opgenomen in 1902 en 1907 door Hr. Ms. Opnemingsvaartuig "van Gogh". Uitg. door het Ministerie van Marine, Afd. Hydrographie, 's-Gravenhage 1908. Bijgewerkt t/m 1939 Bat. Dept. Marine. Met 2 kompas-rozen. Scale 1:200.000, size 74 x 70 cm. With inset: Het Nauw van Straat Bali, scale 1:100.000. -pfol.29- pap. f 100.--
- 253 **INDONESIA.** - Kleine Soenda-eilanden. Straat Lombok. Opgenomen in 1903-1907 door Hr. Ms. Opnemingsvaartuigen "van Gogh" en "Soembawa". Uitg. in 1908 door het Ministerie van Marine, afd. Hydrographie, 's-Gravenhage. Bijgewerkt 1939 Bat. Dept. Marine. Met 4 kompas-rozen, scale 1:200.000, size 65 x 84 cm. Fold. map. -pfol.30- pap. f 100.--
- 254 **INDONESIA.** - Carte du Déroit de la Sonde, par le Capt. de Krusenstern, de la Marine Impériale Russe, 1813. St. Pétersbourg. Map with coloured outlines. Printed area 13½ x 21½ cm. No scale. With Longitude East from Greenwich & Longitude orient. de l'Observatoire Imp. de Paris. No scale. London 1815. -pfol.75- pap. f 55.--
- 255 **INDONESIA.** - Kaart van de vaarwaters en eilanden tusschen Sumatra & Borneo Eerste gedeelte: Bevattende de vaarwaters van Riouw, Singapore, Linga, etc. With 2 insets: 1) Reede van Riouw, door den Adelb. P. Melvill van Carnbee, 1837; 2) Pasage beN. Versch. Water Eil. In the margin profiles of the Straits of Singapore. (Uitg. door J. Swart, Amsterdam, Wed. G. Hulst van Keulen, 1845. No scale. Printed area 61 x 108 cm. Upper part only, from Singapore to P. Timian. -pfol.85- pap. f 160.--
- 256 **INDONESIA.** - Kaart van de vaarwaters en eilanden tusschen Sumatra en Borneo. Ie Gedeelte: Bevattende de vaarwaters van Riouw, Singapore, Linga, enz. Te zamengest. door P. MELVILL VAN CARNBEE. Uitg. door J. SWART. Amsterdam, Wed. G. Hulst van Keulen, 1845. With profiles in the margin. 121 x 107½ cm on linen. -Z.86- f 450.--
- 257 **INDONESIA.** - Section of a geodetical coloured map of Sumatra's West Coast (Indrapura and surroundings). 92 x 59 cm. Scale 1:80.000. (ca 1920). 8 sections on linen. -JP 3114- f 85.--
- 258 **INDONESIA.** - New chart of the Straits of Sunda, Banca, Gaspar & Billiton. Drawn from the best authorities by J.W. Norie, Hydrographer. Folding map. With insets: Profiles of Banka and Lingin Island. Printed area 66 x 95 cm with continuous chart 33 x 34 cm mounted below. No scale. New edition, J.W. Norie & Cie, London 1832. Revised 3c 1844. -pfol.80- pap. f 325.--
- 259 **INDONESIA.** - Agronomische schetskaart der zuidelijke Toradjalanden. Folding coloured map, with legenda. 71 x 66½ cm. Scale 1:300.000. Reprod. Bedrijf Top. Dienst. 1927. -pfol.91- pap. f 80.--

MIDDLE EAST & NORTHERN AFRICA

- 260 **EGYPT.** - Carte de l'Isthme, Compagnie Universelle du Canal maritime de Suez. Dressée sous la dir. de Voisin après les opérations de Larousse. Paris, E. Andriveau-Coujon, 1866. Very fine, fully coloured map, printed area 105 x 78 cm, in 18 sections on linen. With various insets (harbours of Port Said, Ismailia and Suez), profiles, Coup géologique, &c. In excellent condition. -vtr 22- f 550.--
- 261 **EGYPT.** - Nili (the Nile) brachia ambo majora cum oppidis et vicis in utraque ripâ sitis. Engraved map from Niebuhr's Voyage en Arabie (En Suisse = Geneva, 1780). Printed area 28,8 x 25,7 cm. -pfol.119- f 100.--
- 262 **EGYPT.** - A coloured map of the River Nile (Egypt), from 29°00' to 23°45', with inset showing the whole of Egypt. 1962. Scale 1:300.000. Printed area 106 x 75 cm. On linen. Legends in Arabic only. -pfol.50- f 90.--
- 263 **EGYPT.** - Topographical map of Beni Suef (Egypt). Survey of Egypt. 1956. Scale 1:100.000. Printed area 58 x 67 cm. On linen. Coloured. -pfol.98- f 60.--
- 264 **EGYPT.** - Markas Manuf (Egypt). Survey of Egypt 1950. Scale 1:100.000. Printed area 60 x 67 cm. On linen. Coloured. Legends in Arabic only. -pfol.31- f 55.--
- 265 **EGYPT.** - Uweinât, Egypt. Sheet 10. Survey of Egypt 1942. Scale 1:500.000. Printed area 58 x 91 cm. On linen. Coloured. -pfol.110- f 45.--
- 266 **EGYPT.** - el Ghayata, Egypt. 1927. Scale 1:100.000. Printed area 44 x 64 cm. On linen. Coloured. Legends in Arabic only. -pfol.37- f 40.--
- 267 **EGYPT.** - el Hammâm, Egypt. 1927. Scale 1:100.000. Printed area 44 x 64 cm. On linen. Coloured. Legends in Arabic only. -pfol.36- f 52.--
- 268 **EGYPT.** - Wadi el Natrun (Egypt). 1927. Scale 1:100.000. Printed area 44 x 64 cm. On linen. Coloured. Legends in Arabic only. -pfol.33- f 45.--
- 269 **EGYPT.** - Plan of al Foustât (Cairo, Egypt), printed area 32 x 47,5 cm, in two colours, proofsheets of the map as published by P. Casanova in his Essai de reconstitution (Cairo 1919). Added is a manuscript map drawn by Casanova, 49 x 62 cm, which served as model for the printed version. Dustsoiled. -S.70- f 175.--
- 270 **EGYPT.** - Sinai Halbinsel. Katia (Egypt). Aufgenommen 1911, gedruckt vom engl. Kriegsministerium 1913. Nachdruck durch die Kartogr. Abteilung des stellv. Generalstabs 1916. Coloured map, printed area 64 x 40,5 cm, scale 1:125.000, with marginal text. -S.70- f 140.--
- 271 **EGYPT.** - Sinai Halbinsel. Port Said (Egypt). Engl. Kriegsministerium, März 1915. Nachdruck durch die Kartogr. Abteilung des stellv. Generalstabs 1916. Coloured map, printed area 46 x 65 cm, scale 1:125.000. -S.70- f 200.--



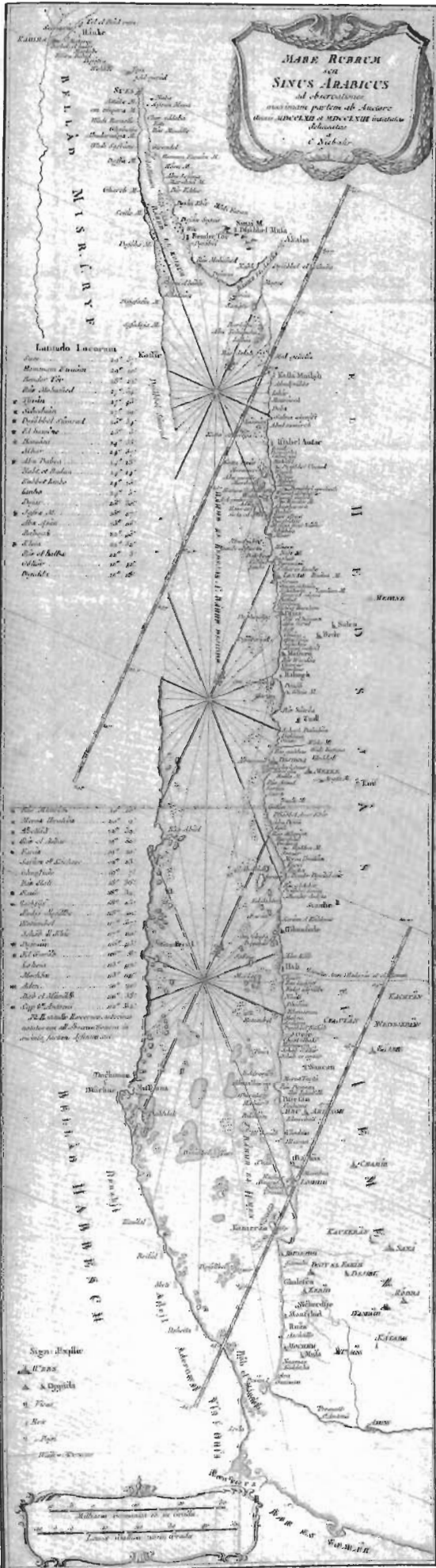
Nr 15



Nr 16



Nr 17



- 272 EGYPT. - Nouveau plan du Caire, Cairo, Librairie Centrale J. Barbier, ca. 1920. Coloured map, printed area 675 x 495 mm. Folded, in cloth folder. -vtr 9- £ 165.--
- 273 JORDAN. - The Hashemite Kingdom of the Jordan. Sheets 2-3 Karak - Ma an. Compiled and drawn by Dept. of Lands & Surveys of the Jordan. Amman 1949-50. -Z-set £ 80.--
- 274 MIDDLE EAST. - Portolan map by an unknown cartographer, first half of the 14th century, showing Eastern Europe and the Middle East (Turkey, Palestine and Egypt). Photographic reproduction (slightly reduced, 60 x 61 cm) after an original in the collection of Youssouf Kamal. No date, ca. 1935. Folded. -pfol.114- £ 225.--
- 275 NORTHERN AFRICA. - Croquis de l'Afrique du Nord. Supplément du Bulletin "L'Armée d'Afrique". Héliogravé et impr. au Serv. Géogr. de l'Armée, Bureau topogr. du 19e C.A. Avec légende. Folding coloured map. 64 x 53 cm. Scale 1:5.250.000. Noël 1924. -pfol.65- pap. £ 65.--
- 276 NORTHERN AFRICA. - Carte de l'Afrique septentrionale. Dressé par J.M. Le Roux d'après les voyages & découvertes des principaux explorateurs qui ont pénétré dans le Sahara et le Soudan. Folding (partly) coloured map avec itinéraires (voy. de Flatters, Duveyrier, e.a.). 60 x 48 cm. Scale 1:10.000.000. Alger 1886. -Z.58- pap. £ 100.--
- 277 NORTHERN AFRICA. - Carte de l'Afrique septentrionale redigée et gravée d'après les dernières découvertes par J. Segato. Florence 1830, facsimile 1925. Printed area 55 x 93,5 cm. -Z- £ 45.--
- 278 NORTHERN AFRICA. Carte de l'Algérie d'après les levés et les reconnaissances des Officiers d'Etat major 364. Publ. par le Dépôt de la Guerre. Etant Dir.: Le Colonel Blondel. Scale 1:400.000. Provinces d'Oran, size 119 x 86 cm. 2 fold. leaves, et de Constantine, size 104 x 86 cm, 2 fold. leaves. Gravée sur pierre par Erhard Schiëble. Paris 1854-6. (hole in margin) -pfol.17- set pap. £ 300.--
- 279 NORTHERN AFRICA. - Carte pour suivre la lecture du Rapport de J. Duval, sur la colonisation de l'Algérie. Gravé par F. DeLamare. Folding map with 2 insets: Environs d'Oran & Alger. 411 x 251 cm. (no scale). Paris, impr. Janson, 1865. \$1. foxed. -pfol.60- pap. £ 65.--
- 280 NORTHERN AFRICA. Algérie. Folding coloured map 120 x 79 cm. Scale 1:900.000 36 sections on linen. With 7 insets: Régions d'Oran, Alger & Constantine. scale 1:450.000, and plans of the villages Oran, Alger & Constantine. With Legenda. Cartes Tarides, Paris (ca 1950) -3.74- £ 120.--
- 281 NORTHERN AFRICA. - New and accurate map of the Western (an Eastern) parts of Barbary, containing Fez, Morocco, Algiers, Tunis & Biledulgerid (and Tripoli, Barca, Faisan and the Northern parts of Egypt). Two maps projected below each other. London, E. Bowen, (1747). Printed area 34 x 42,5 cm. -map 32- £ 135.--
- 282 NORTHERN AFRICA. - Environs de Bizerte (Tunisie). Gravé par Erhard. Publ. par le Dépôt de la Guerre, Paris. Folding coloured map, 8 sections on linen, 47 x 72 cm, scale 1:20.000. Paris 1880. -Z.51- £ 68.--
- 283 NORTHERN AFRICA. - A chart of Ceuta and Tetuan Bays; in which are pointed out, the most advantageous places of rendez-vous for the purposes of victualling & watering a fleet, surveyed, and particularly designed for the use of the British navy, by Capt. Jn. Knight of the Royal Navy. London, D. & E. Steel, 1800. Folded map. Printed area 51,2 x 74 cm. Inset: A plan of the Zaffarine Islands. Slightly damaged in the fold. Some light stains. -pfol.4- £ 175.--
- 284 NORTHERN AFRICA. - Mapa de Marruecos, protectorado Español. Escala 1:200.000. Curvas de nivel a 50 metros. 84 x 191,5 cm. In 6 sections on linen folded. Ca. 1925. -Z.667- £ 400.--
- 285 NORTHERN AFRICA. - Portolan map of Perrinus Vesconte, dating from 1327 and showing the Mediterranean with the coast of North Africa. The map is conserved in the Medicea Laurenziana at Florence. Reproduction in actual size (printed area 57 x 93 cm) after a photograph, no date, but ca. 1935. Folded. -pfol.113- £ 180.--
- 286 NORTHERN AFRICA. - Missions dans le Sahara. Itinéraires de F. Fourreau, dressés par lui-même. Itinéraire 1893-1894, itinéraire antérieure, août 1894. Folding map in 4 folding sections, each 100 x 73 cm. Scale 1:400.000. 1894. -Z.668- in box £ 150.--
- 287 NORTHERN AFRICA. - Sahara au 1/4.000.000e (Feuille Ouest) établi sous la dir. de L. de Jonchay, Cap. de frégate (R). Ed. par Boudeville-Verduron. Paris 1959. Fold. coloured map 90 x 75 cm, scale graph. 1:4.000.000. With Legenda. -pfol.47- pap. £ 40.--
- 288 NORTHERN AFRICA. - Carta speciale del Sudan Orientale secondo lo stato attuale delle cognizioni geografiche ad illustrazione dei Viaggi di G. Beltrame costrutta e disegnata da G. Cora. With Spiegazioni. Folding map. 29 x 18 cm. Scale 1:3.000.000. Torino 1879. -pfol.66- pap. £ 45.--
- 289 NORTHERN AFRICA. - Carte de la régence de Tunis, dressée d'après les cartes nautiques de la marine anglaise, les cartes de l'Algérie et de la Tunisie publ. par le dépôt de la guerre franc. et les itinéraires des voyageurs européens, surtout de feu M. Wimmans, par H. Kiepert. Folding coloured map 54 x 43 cm, scale 1:800.000. Berlin 1881. -Z.63-pap. £ 72.--
- 290 NORTHERN AFRICA. - Carte de la Régence de Tunis (feuille Ière). Dressée au Dépôt de la Guerre. D'après les observations et les reconnaissances de Mr Falbe, capitaine de vaisseau Danois, de Mr. Pricot-Sto-Marie, chef d'escadron d'Etat-major français et d'après les renseignements rec. par eux, Etant Directeur: le colonel Blondel. Folding map in 16 sections on linen. 55 x 90 cm. Scale 1:400.000. Paris 1857. (upper part only, from the Mediterranean coast to Dj. Toula in the south) -S.74- £ 145.--
- 291 PALESTINE. - Carte de la Palestine et du Liban par B. Thuillier, avec le concours de E.G. Rey & A. Chauvet. (ca. 1880). Lichtdruck & Kart. Abtlg d. kgl. Landesaufnahme (ca. 1920). Printed area 86 x 69,5 cm, scale 1:500.000. -Z- £ 75.--
- 292 SAUDI-ARABIA, Mare Rubrum (Red Sea) seu Sinus Arabicus... delineatus a G. Niebuhr. Engraved map from Niebuhr's Voyage en Arabie (En Suisse = Geneva, 1780). Printed area 75 x 20,8 cm. -pfol.117- £ 180.--
- 293 SYRIA. - Karte des Liva Haleb (Aleppo) und eines Theiles des Liva Dschebel Bekker. Nach den Reisewegen N. Hartmann's in den Jahren 1882/1883 & 1884. Mit Erklärung. Folding coloured map. 75 x 58 cm. Scale 1:220.000. Gezeichnet von E. Hartmann. With 2 insets: 1) Das Land zwischen Antakija & Bet el-ma (Dephne). Scale 1:55.000; 2) Plan der Kunststrasse Isken-derun-Haleb. Reducirt auf scale 1:400.000. Berlin 1894. -Z.68- pap. £ 85.--
- 294 SYRIA. - Syrien und Mesopotamien, zur Darstellung der Reise des Max Freiherrn von Oppenheim vom Mittelmeere zum Persischen Golfe, 1893. Bearbeit. von R. Kiepert. Two sections, printed area each 730 x 550 mm, scale 1:850.000. Slightly soiled, torn in folds, but still repairable. -pfol.35- £ 95.--
- 295 SYRIA. - Karte von Syrien (Palästina und Süd-Libanon). Den Namen Jacotin's und Burckhardt's gew. von H. BERGHAUS. Wallmap with stocks on linen. 32 x 231 ins. Scale 1:450.000. With 2 inset-maps, scale 1:18.000.000 and 15 plates and profiles. Gotha 1835. -JP 3114- £ 165.--
- 296 YEMEN. - Terrae Yemen maxima pars, seu Imperii Inami, principatus Raukoben, nec non ditionum Haschid u Bekel, Nehim, Ghaulan, Abu Arfach et Aden, tabula... auctore C. Niebuhr. Engraved map from Niebuhr's Voyage en Arabie (En Suisse = Geneva 1780). Printed area 56,4 x 36 cm. (left margin cut close, a few small tears in left margin repaired) -pfol.120- £ 175.--

INDOCHINA, CENTRAL & EAST ASIA

- 297 ASIA. - Kaart van 't Ooster en Wester gedeelten van Asia en America, tussen den 30 en 75 graden Noorder Breedte en 125° en 285° Lengde en aangrenzende Nieuwe Eilanden door de Russen ontdeekt, aan Kamtschatka, Yesso en America, om te dienen tot de Bydvaagen tot de Beschryving van Japan, door de Heer Radermacher... van 't Bataviaasch Genootschap... 1781. Engraved map by P. Mol, 1785. Printed area 211,2 x 41 cm. - Cordier 451 -pfol.121- £ 125.--

- 298 CHINA. - Villes de la Province de Chensi: Si-ngan-fu & Tchang Lun. (No place, ca. 1750). J.v. Schley direx. Printed area 20 x 27,3 cm. -pfol.89- f 100.--
- 299 CHINA. - New and accurate map of China, drawn from surveys made by the Jesuit Missionaries. London, E. Bowen, (1747). Printed area 34,5 x 42 cm. -map. 21- f 120.--
- 300 CHINA. - Map of the Route of the British Embassy (to China), from the mouth of the Peiho River, to Pekin and from thence to Canton, in the year 1816. London 1817. Printed area 51 x 40 cm. Slightly foxed. -pfol.27- f 95.--
- 301 CHINA. - Kaart van de Chinese kust en van Formosa volgens Nederlandsche grootendeels handschriftelijke kaarten van de zeventiende eeuw te zamen-gesteld door Ph. Fr. von Siebold 1849. Lithographed map. Printed area 47,4 x 64 cm. (From: Siebold, Nippon. Leiden 1832-1858) -T.20- f 160.--
- 302 CHINA. - Plans de quelques villes de la province de Hou-Quang: Yong Chew Fu, Vu Chang Fu, Whang Chew Fu. (No place, ca. 1750). Printed area 19,6 x 29,1 cm. -pfol.88- f 100.--
- 303 CHINA. - Carte de l'Isle de Cheu-chan ou Isle de Chusan de la Province de Che-kiang avec les costes et Isles voisines. Tiré de Thornton Hydrogr. Anglois et autres Navigateurs, par N.B(ellin)(No place, ca. 1750). Printed area 23 x 32 cm. -pfol.87- f 125.--
- 304 CHINA. - Lan-tcheou ou Lan-chew dans la province Chensi ou demeure le second Viceroy de Chensi. Can Tcheou ou Kan-chew dans la province de Chensi. Tchün-Yuen-Fou ou Chin-Yuen-Fu dans la province de Koei-Tcheou ou Quey-Chew. J.v. Schley direx. (No place, ca. 1750). Printed area 20 x 27 cm. -pfol.81- f 100.--
- 305 JAPAN. - Japan. Ed. E. Stanford. London. N.d. Scale 1:3.168.000. 49 x 60 cm. 20 sections on linen. -JP 3114- f 45.--
- 306 JAPAN. - Geological survey of Japan. Collection of 6 maps of the following districts: Kadzusa, Kofu, Tokio, Chiba, Mito, Nikko. Scale 1:200.000. Printed area 30 x 47 cm. On linen in silk cloth folders. Coloured out-lines. Tokyo 1884-8. -Z.266- set f 350.--
- 307 JAPAN. - Geological survey of Japan. Collection of 6 maps of the following districts: Fuzi, Idzu, Maebashi, Nagano, Shizuoka, Yokohama. Scale 1:200.000. Printed area 30 x 47 cm. On linen in silk cloth folder. Coloured outlines. Tokyo 1884-88. -Z.266b- set f 350.--
- 308 JAPAN. - Map of Japan and adjacent regions. Prepared and published by Kokuai Bunka Shinkokai (the Society for international cultural relations). Tokyo 1937. Coloured map 169 x 203 cm, in 24 sections on linen, scale 1:2.000.000. Index (ii, 22, 11 p.). In cloth folder. -vtr 23- f 680.--
- 309 JAPAN. - Kanto District. N.A.A. Road map. Ed. by Nippon Automobile Ass., Japan Travel Bureau. N.d. Scale 1:400.000. 28 x 36 ins. -JP 3114- pap. f 40.--

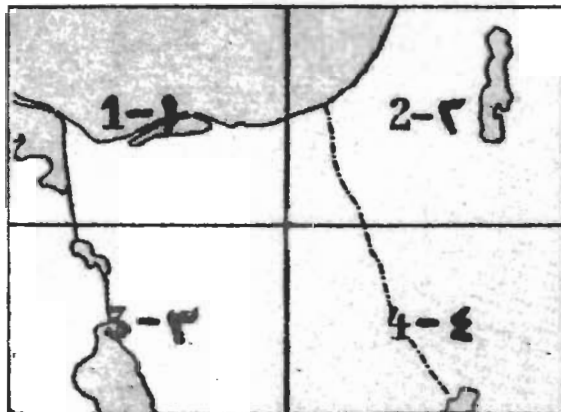
MAPS FROM PHILIPP FRANZ VON SIEBOLD'S NIPPON

The following section, comprising items 310 to 324 offers a selection of lithographed maps from NIPPON, Archiv zur Beschreibung von Japan und dessen Neben- und Schutz-ländern (Leiden 1832-1858), the most outstanding achievement of Philipp Franz von Siebold, whose exhaustive investigations and descriptions of Japan opened the era of Japanese studies on a scientific basis.

- 310 JAPAN. - Japan mit seinen Neben und Schutzländern, nach einer ursprünglich Japanischen Karte. Lithographed map. Printed area 21,9 x 33,9 cm. (From: Siebold, Nippon. Leiden 1832-1858) -T.35- f 180.--
- 311 JAPAN. - Gedaene Ontdeckinghe onder den Commandeur Marten Gerritsen Vries anno 1643. Lithographed map (with 4 insets relating to other early voyages to Japan by Vries, Colnett, van Linschoten and according to a Dutch 17th century manuscript map). Printed area 48,2 x 64,7 cm. (From: Siebold, Nippon. Leiden 1832-1858) -T.35- f 150.--
- 312 JAPAN. - Hokkaido. Die Insel Jezo und die Japanischen Kurilen, nach einer Originalkarte von Takahasi Sakusaimon, Hofastronomen zu Jedo. (With 2 insets): Bai von Atkesi nach Mogami Tokunai. Die Strasse Tsugaru nach einer Karte von Mogami Tokunai. Lithographed map with indications on latitudes and longitudes according to Krusenstern, Vries a.o. Printed area 44,4 x 55,4 cm. (From: Siebold, Nippon. Leiden 1832-1858) -T.35- f 200.--
- 313 JAPAN. - Honshu. Insulae Nippon partem septentrionalem repraesentans. Lithographed map, handcoloured, geographical names in Japanese characters. Printed area 52,3 x 40,8 cm. (From: Siebold, Nippon. Leiden 1832-1858) -T.35- f 150.--
- 314 JAPAN. - Kyushu. Insulae Nippon partem orientalem repraesentans. Lithographed map, handcoloured, geographical names in Japanese characters. Printed area 51,8 x 40,8 cm. (From: Siebold, Nippon. Leiden 1832-1858) -T.35- f 200.--
- 315 JAPAN. - Kyushu. Kiusiu insulam cum adjacentibus minoribus et insulae Nippon partem occidentalem repraesentans. Lithographed map, handcoloured, geographical names in Japanese characters. Printed area 52,5 x 41 cm. (From: Siebold, Nippon. Leiden 1832-1858) -T.35- f 175.--
- 316 JAPAN. - De baai van Nagasaki opgenomen door Ph. Fr. von Siebold 1828. Lithographed map, mentioning the Dutch trading post Dezima. Printed area 35,3 x 51,6 cm. (From: Siebold, Nippon. Leiden 1832-1858) -T.35- f 300.--
- 317 JAPAN. - Haven en omstreken van Nagasaki opgenomen door Ph. Fr. von Siebold 1828. Lithographed map, mentioning the Dutch trading post Dezima. Printed area 24,3 x 32,5. (From: Siebold, Nippon. Leiden 1832-1858) -T.35- f 300.--
- 318 JAPAN. - Ryukyu. De Liuku-Eilanden Tsjudan of de Middel-Eilanden volgens eene oorspronkelijke Japansche kaart. (And: De Liuku-Eilanden Sannan of de Zuid-Eilanden volgens eene oorspronkelijke Japansche kaart. Two lithographed maps, measuring 27,7 x 42 cm and 32 x 44 cm, on one sheet. (From: Siebold, Nippon. Leiden 1832-1858) -T.35- f 130.--
- 319 JAPAN. - Shikoku & Honshu. Sikok Insulam et insulae Nippon partem mediam repraesentans. Lithographed map, nicely handcoloured, geographical names in Japanese characters. Printed area 52,2 x 40,8 cm. (From: Siebold, Nippon. Leiden 1832-1858) -T.35- f 275.--
- 320 JAPAN. - Straat van Diemen en de Linschoten-Eilanden volgens eene oorspronkelijke Japansche kaart. (And: De Liuku-Eilanden Sanbok' of de Noord-eilanden volgens eene oorspronkelijke Japansche kaart. Two lithographed maps, measuring 32,2 x 48 cm and 27,7 x 45,6 cm, on one sheet. (From: Siebold, Nippon. Leiden 1832-1858) -T.35- f 130.--
- 321 JAPAN. - Plan van het eiland Tanegasima. Lithographed map, slightly tinted in blue. Printed area 25,7 x 21,2 cm. (From: Siebold, Nippon. Leiden 1832-1858) -T.35- f 100.--
- 322 KOREA. - Koorai verdeeld in acht Kreitsen, volgens de oorspronkelijke kaart Tso-sien p'hal to dsi to. Lithographed map, mainly in outline, geographical names in Japanese characters. Printed area 39,8 x 27 cm. (From: Siebold, Nippon. Leiden 1832-1858) -T.35- f 150.--
- 323 KOREA. - Karte von der Kōraischen Halbinsel (Kōrai v. Tso-sjen) nach einem japanischen Originale 1840. Lithographed map, tinted in blue. Printed area 50,6 x 36 cm. (From: Siebold, Nippon. Leiden 1832-1858) Blank margins slightly torn. -T.50- f 250.--
- 324 SACHALIN. - Die Insel Krafto (Seghalien) und die Mündung des Mankö (Amur) nach Originalkarten von Mogami Tokunai und Mami Rinzo. Lithographed map. Printed area 67 x 49,2 cm. (From: Siebold, Nippon. Leiden 1832-1858) -T.35- f 130.--



Nr 18



PRINTS

325 EGYPT. - Series of drawings of Egyptian scenery and animals on 15 numbered sheets 39 x 27 cm, dated 1822-1823, and probably executed during an expedition to Egypt by an English party. The skilful pencil and ink drawings include subjects like Capricorn, Red Sea fishes (partly coloured), Temple Djeb Dokhan, &c. Added are 9 smaller sheets with miscellaneous drawings on related subjects. From the papers of the geologist G.B. Greenough, who is, however, not known to have been in Egypt. -Z- set / 625.--

INDONESIA. Coloured lithographed plates from Raffles' History of Java, French edition Bruxelles 1824, the first such to be published on an Indonesian subject. Printed area c 20 x 15 cm. -Z.506-

- 326 A Panganten Wadon, ou la Fiancée / 225.--
- 327 Ronggeng ou Bajadère (slightly foxed) / 170.--
- 328 Femme Javanaise de la basse classe / 170.--
- 329 Papou, ou natif de la nouvelle Guinée, âgé de 10 ans / 185.--
- 330 Habitant de Madura ayant le rang de Mantri / 180.--

BIRDS. Coloured lithographed plates from Blaauw's Cranes, Leiden 1897, by the famous artists Leutemann (nr. 331) and Keulemans. Size c. 30,5 x 23 cm.

- 331 The Eastern Saurus Crane / 180.--
- 332 The Cape Crowned Crane / 185.--
- 333 The Stanley Crane / 200.--
- 334 The Balearic Crane, immature and chick / 225.--
- 335 The Demoiselle Crane, chick / 190.--
- 336 The American Crane / 170.--

MAPS

337 EUROPE. - Carte générale de la chaîne des Alpes contenant la haute Italie, la Suisse et l'Allemagne méridionale, dressée pour l'intelligence de l'histoire des guerres de la Révolution, par le Général Jomini. Detailed engraved map in 3 (of 4) sections, each sheet c. 60 x 75 cm, missing lower right sheet. No date, c. 1820. Mounted in smaller sections on linen. -Z.478- / 215.--

338 EUROPE. - Carte générale des îles Britanniques contenant l'Angleterre, l'Ecosse et l'Irlande... par J. Andrièveau. Paris 1845. Fine engraved map, printed area 85 x 61 cm, all counties differently coloured by hand, in 21 sections on linen, with original label at the back, in box. -vtr5- / 525.--

339 EUROPE. - The Crimea, chiefly from surveys made by order of the Russian Government, compiled and drawn by J. Arrowsmith. London 1854. Printed area 48 x 65 cm, in 12 sections on linen. With: Southern portion of the Crimea, from surveys made by order of the Russian Government. Printed area 60 x 75 cm, in 20 sections on linen. Together in orig. cloth slipcase with label, case stained and slightly worn, maps fine. -vtr9- / 480.--

340 EUROPE. - Carte de la Crimée, pour suivre les opérations de la Guerre d'Orient. Paris, E. Bourdin, 1854. Lith. P. Tardieu. Map with coloured outlines, printed area c. 60 x 92 cm, in 21 sections on linen, in slipcase. -vtr9- / 225.--

341 EUROPE. - Carte générale de toutes les routes de postes d'Europe, dressée par des officiers d'état major. Publiée par V. Clerot, Paris 1855. Fine large engraved map with outline colouring by hand, printed area c. 90 x 130 cm, in 32 sections on linen, in folder. -vtr5- / 530.--

342 AFRICA. - Collection of nine sheets from an atlas of Abyssinia, in Italian, published by the Istituto Geografico Militare 1899-1900. Printed area 30 x 29,5 cm, coloured, scale 1:400000. The following sections are present: Gondar - Macallè - Sereba - Semien - Debarca - Abacheri - Baia d'Anfilè - Tolè - Agordat. Dustsoiled. -Z- / 235.--

343 MIDDLE EAST. - Coloured lithographed map of Egypt, in Arabic, "Par ordre de S.A. Ismail Pascha, Khédive d'Egypte, fait par Mahmud Bey. Publiée par A. Kaufmann, Cairo, Lith. Brockhaus, Leipzig". Three (of 4) sheets mounted in sections on linen, missing the upper right section. Dated 1289(1872). Printed area per sheet c. 60 x 70 cm. -Z.507- / 185.--

344 MIDDLE EAST. - Karte des Türkisch-Ägyptischen Grenzgebietes (zwischen Iedschas-Bahn und Sues) (now Egypt, Israel and Jordan), bearbeitet auf Veranlassung des Türkischen Kriegsministerium durch die Kartographischen Abteilung des Stellvertretenden Generalstabes der Preussischen Armee. Coloured map on scale 1:250000 in 4 sheets each 70 x 79 cm, folded, with 2 booklets containing German and Arabic alphabetical indexes. Legends on the map in German, the Arabic sometimes added, explanation of symbols in German and in Turkish. Berlin(?) 1915. -vtr9- / 425.--

345 MIDDLE EAST. - Karte von Ägypten (Suez Kanal) 1:50000. Reproduced by the Photo-metal process at the Survey Dept., Egypt. Nachdruck Berlin 1915. Coloured map in 11 sections, each 56 x 50 cm, folded, with German titling on the back and with loose Blatteinteilung. Well preserved. -vtr9- / 575.--

346 MIDDLE EAST. - Plan de Jerusalem construit d'après les relevés de Symonds et Tobler par C.W.M. van de Velde. Paris (1857). Tinted lithograph map, extra to the de luxe ed. of Van de Velde's Le pays d'Israel. Printed area 355 x 260 mm. Fine. -kab3- / 145.--

347 FAR EAST. - Carte de l'Asie Orientale et de l'archipel d'Asie. (Indochina, China & Japan, Philippines, Indonesia). Scale 1:8000000. Paris, H. Barrère, 1898. Coloured map, printed area 105,5 x 61,5 cm, folded, very slightly torn. -Z.505- / 185.--

SOME ATLASSES AND RELATED MATERIAL

348 ANVILLE, D' Atlas antiquus Danvillianus minor. Nuremberg 1801. Small-Folio. (12 maps with coloured outlines) -U.99/60- / 400.--

349 ATLAS ARCHÉOLOGIQUE de l'Algérie (du Gouv. Général de l'Algérie). Ed. spéciale des cartes au 200.000e du Service Géographique de l'Armée. Avec un texte explicatif rédigé par S. GSELL. Alger 1902-8. Folio. (viii, 388 p., 23 textplans, 44 fold. col. maps) (maps & text of no. 16, 44, 47-50 missing, as well as the text of map 40) -Z.99/51- in sheets / 850.--

350 (ATLAS of the Chinese Empire, with geographical tables appended). Ta-Ch'ing Ti-kuo yu-ti fen-t'u (fa-la Chung-kuo ti-li piao-chieh). Tokyo, Jih-hua shu-chü, 1908. 4to. (2 lvs, 27 coloured double-page maps, 64, 21 Chinese text, 2 fold. tables, impressum leaf) -vtr24- / 775.--

351 ATLAS of Iran. White revolution. 3rd rev. ed. Tehran N.d. 4to. (200 p. incl. col. maps & tabl.) (in Persian & English) (cover loose; spine sl. damaged) -S.98/45- boards / 325.--


352 ATLAS van Nederland. Atlas of the Netherlands. Compiled by the Foundation for the scientific Atlas of the Netherlands. The Hague, Government printing and publishing office, 1963-77. Large folio. (5 lvs, 98 coloured folding maps 56 x 66 cm with on verso explanatory text in Dutch and diagrams) -Z- in sturdy binder / 850.--

353 ATLAS van Nederlandsch Oost-Indië, bij het Topographisch Bureau te Batavia samengesteld in de jaren 1897-1904. Omgewerkte uitgave van den Atlas van J.W. Stemfoort en J.J. ten Siethoff. The Hague 1898-1907. Large folio. (title-leaf, 15 sheets with printed area 585 x 845 mm) (missing the first (general) map; most maps with small marginal tears, partly repaired) -JP3113- set / 525.--

354 ATLAS REPUBLIKY CESKOSLOVENSKE / Atlas de la République Tchécoslovaque. Vydala ČAUW za podporu ministerstva zahraničních věcí republiky Československé. Vrchní redaktor: J. Pantoflíček & V. LÁSKA. Textový doprovod k mapám. Prague 1935. Folio. (7 p., 55 leaves with col. maps, 37 p.) (in slipcase) -JP3114- / 450.--

355 ATLAS. - SUOMEN KARTASTO / Atlas of Finland / Atlas över Finland 1960. (by) the Geographical Society of Finland & the Department of Geography, Helsinki

HET JAPANESE RIA											
大日本											
DAI NIP-PON											
DE YOORNAAMSTE EILANDEN				國三四				VAN HETZELVE ZIJN			
H SI - KOR				H KU - NIP				I NIP-PON			
戶ト平	草多天	島多五	島多八	島多大	島多屋	岐多隱	岐多壹	島多子種	路多淡	渡多佐	馬多對
Ura to	Ama-tama	Go-tan	Bata-dyusima	Oo-ama	Jak-sime	O-ki	I-ki	Ta-negakima	Awa-dai	Na-du	Taiou-ma
Sampi wakt kranten en wakt en wakt Landatappen											
河多三	張多尾	摩多志	勢多伊	賀多伊	道多海	津多攝	泉多和	内多河	和多大	城多山	内多變
Ka-san	Chang-wei	Ma-shi	Sei-i	Ka-i	Do-hai	Tsu-shetsu	Suen-wa	Uchi-ka	Wa-tai	Shi-yama	Uchi-hen
江多近	道多山	陸多常	總多下	總多上	房多安	藏多武	摸多相	豆多伊	雙多甲	河多酸	江多遠
Ke-tsu	Do-san	Rik-tsu	Sou-jou	Sou-jou	Hou-an	Sau-bu	Moh-sou	Mame-i	Sou-ka	Ka-san	Ke-tsu
登多能	賀多加	前多越	狹多若	道多陸	羽多出	真多陸	野多下	野多上	渡多信	群多飛	渡多美
Tou-nou	Ka-ka	Mae-tsu	Yama-waka	Do-riku	Hane-daru	Mak-riku	No-jou	No-jou	Waki-sin	Gumi-tsu	Waki-mi
岐多隱	見多石	雲多出	者多伯	幡多因	馬多但	後多丹	波多丹	道多陰	波多佐	後多越	中多越
Ke-ki	Mi-ishi	Sun-daru	Shira-hi	Hata-in	Uma-tan	Uchi-tani	Ha-tani	Do-in	Waki-tsu	Uchi-tsu	Chu-tsu
路多淡	伊多紀	道多海	門多長	防多周	藝多安	後多備	中多備	前多備	作多美	磨多播	道多陽
Ri-dan	I-ki	Do-hai	Mon-tsu	Bou-tsu	Gei-an	Uchi-bi	Chu-bi	Mae-bi	Saku-mi	Mura-haku	Do-yang
向多日	後多肥	前多肥	後多豐	後多筑	前多筑	前多豐	道多海	佐多土	豫多伊	岐多讚	波多阿
Kou-ni	Uchi-hi	Mae-hi	Uchi-tsu	Uchi-tsu	Mae-tsu	Mae-tsu	Do-hai	Saku-tsu	Gei-i	Ke-tsu	Waki-ka
II. CEYNSHARE LANDEN						I. TOBEYONDE LANDEN					
麗多高		球多琉		馬多對		岐多壹		摩多薩		隅多大	
Ri-kou	Ri-kou	Ma-tai	Ke-ki	Ma-tai	Ke-ki	Ma-tai	Ke-ki	Ma-tai	Ke-ki	Ma-tai	Ke-ki
III. CEYNSHARE LANDEN						I. TOBEYONDE LANDEN					
麗多高		球多琉		馬多對		岐多壹		摩多薩		隅多大	
Ri-kou	Ri-kou	Ma-tai	Ke-ki	Ma-tai	Ke-ki	Ma-tai	Ke-ki	Ma-tai	Ke-ki	Ma-tai	Ke-ki

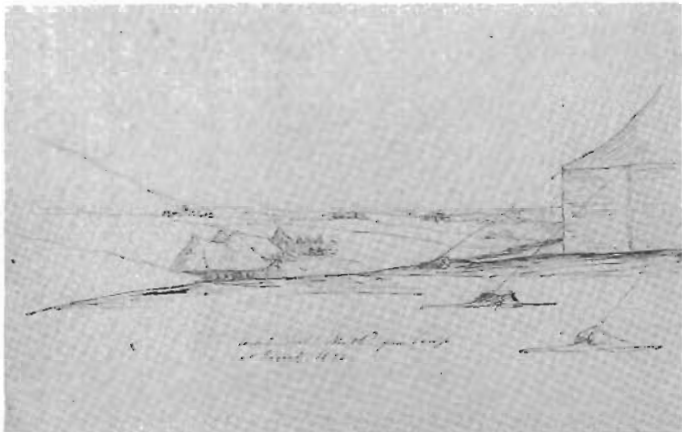


6th European Antiquarian Bookfair

MARCH 7-10, 1985

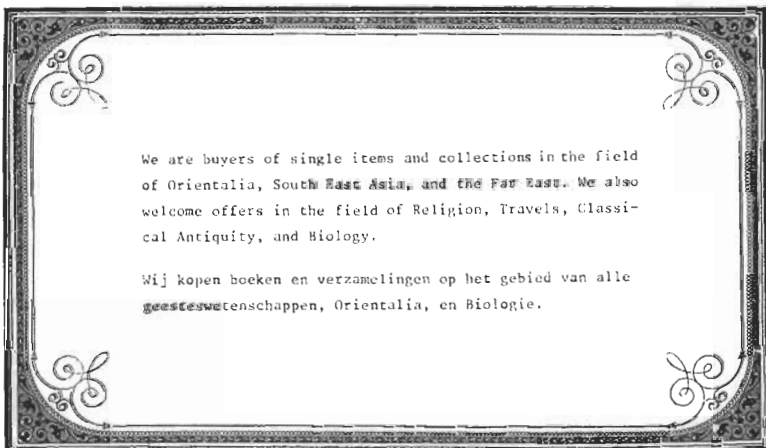
40 bookdealers from 7 countries will offer valuable books and prints from 6 centuries

Marriott Hotel
Stadhouderskade 21
Amsterdam (The Netherlands)
Opening-night: March 7, 1985 (18-22 hrs)
Daily: March 8-9, 1985 (11-19 hrs)
March 10, 1985 (11-18 hrs)




Nr 325

- 355 ATLAS. - SUOMEN KARTASTO / Atlas of Finland / Atlas över Finland 1960. (by) the Geographical Society of Finland & the Department of Geography, Helsinki University. Editor: L.Aario. Helsinki 1960. textbook in-8vo & atlas in-folio. 2 vol. (123 p. Finnish t.; 7 p. Forework & contents in Finnish, English & Swedish, 39 dbl.-p. coloured maps) -JP3114- set / 140.--
- 356 ATLAS VAN TROPISCH NEDERLAND. Uitgegeven door het Nederlandsch Aardrijkskundig Genootschap in samenwerking met den Topografische Dienst in Nederlandsch-Indië. And: Naamregister. The Hague 1938. Large-folio. (8 p., 31 maps, 17 p.) -Z99/10- / 960.--
- 357 (DELISLE, J.N.) Atlas Russicus/Atlas Russe contenant une carte générale et dixneuf cartes particulieres de tout l'Empire de Russie et des pays limitrophes...construits par l'Academie Imperiale des Sciences de St. Petersburg. St. Petersburg 1745. Large-folio. (16 pages with Latin and French text, one large folding map, 19 double-page maps) -JP3115- halfaale / 7500.--
- Spine slightly worn, but a nice copy with large margins of the first complete atlas of Russia to be published. The compiler, Joseph Nicolas Delisle, was called to Russia in 1726, and taught astronomy for 21 years at the St.Petersburg Academy. Of this atlas three versions are known: titlepage and text in Russian only, in Russian & French, and in German. The maps in our copy have Latin titles, the legends are all in transcribed Russian. See further Bagrow-Skelton 251.
- 358 GOSSELLIN, P.F.J. Recherches sur la géographie systématique et positive des anciens; pour servir de base à l'histoire de la géographie ancienne. Paris, Imprimerie de la République / Imprimerie Royale, 1798-1813. 4to. 4 vol. (viii, 272 p., 2 lvs, 322 p., one leaf; 2 lvs, 356 p.; 2 lvs, 464 p., together 54 maps on 28 folding lvs, plan of a compass-card)(uncut copies sl. foxed) Brunet II 1673, Graesse III 121.VTRJ set boards / 2200.--
- 359 KAMAL, YOUSSEUF. Monumenta Cartographica Africae et Aegypti. Vol. V Additamenta (Naissance et évolution de la cartographie moderne). No place, 1951. Large folio (75 x 60 cm). In 2 vol. (title-page, preface leaf, 83 plates (of which 13 double-page), contents leaf; title-page, 81 plates (one four-fold), contents leaf) -JP- set / 2500.--
- The last two volumes of the extremely rare 16 volume set Monumenta, published privately by Yousseuf Kamal between 1926 and 1951. The fourteen preceding volumes covered the era of Ptolemy, of Arabic cartography, and the era of portolans in circa 620 plates with circa 930 sheets of descriptive text. The two post-war volumes were issued without text. The whole work was printed in an edition of one hundred copies only, of which the greater part was distributed gratis to the leading libraries of the world.
- The luxuriously produced atlases of the 5th volume contain large-scale reproductions of unpublished cartographical material on Africa and Egypt, e.g. portolans by Fra Mauro, Bertran, Diego Homem, Lazaro Luis, a.o., and reproductions from editions of Ptolemy (Rome 1478), Waldseemüller, Plancius, Blaeu, de Fer, d'Anville, Pococke, Van Keulen, Bruce, Jomard, Petermann, Schweinfurth etc.
- 360 ROLLIN, (C.). Atlas contenant vingt-sept cartes géographiques pour servir à l'Histoire ancienne et romaine. Paris, J.-F. Bastien, 1807. Small-folio. (2 lvs, 27 maps (mostly folding)) - See also no. 88 mod.bds. / 500.--
- 361 STEENFOORT, J.W., & J.J. TEN SIETHOFF. Kaarten der Nederlandsche bezittingen in Oost-Indië, naar de nieuwste bronnen samengesteld. The Hague 1898-1907. Large-folio. (16 maps of which 14 folding) -JP3114- / 750.--
- 362 VANDERMAELEN, P. - Collection of 44 maps (out of 61) of the section Africa, published as the third part of the famous Atlas universel de géographie physique, politique, statistique et minéralogique, Bruxelles 1827. The complete atlas, numbering 390 sheets, was an enormous success in its time, not only because of its excellent quality of lithography (by H.Ode), but also because of its geographical completeness of detail. The maps are all on identical scale and in conical projection, so as to form all together a globe of 7,777 metre in diameter. Many maps have insets with full geographical, historical, and statistical information on the region concerned, and are to be read from one sheet to the next one. Our copy consists of 44 sheets, printed area appr. 47 x 57 cm outline colouring, numbered 1b, 2, 4, 5, 7-10, 13, 15, 16, 17, 20, 21, 23-40, 42-48, 50, 52, 55-57. More details available on request. set / 1650.--



We are buyers of single items and collections in the field of Orientalia, South East Asia, and the Far East. We also welcome offers in the field of Religion, Travels, Classical Antiquity, and Biology.

Wij kopen boeken en verzamelingen op het gebied van alle geesteswetenschappen, Orientalia, en Biologie.



E. J. BRILL-ANTIQUARIAAT
NIEUWE RIJN 2 - LEIDEN

Sinds 1972 heeft ons antiquariaat een maandelijks zaterdagmarkt gehouden, waarbij negen maal per jaar de normaal op zaterdag gesloten deuren opengingen.

Op deze markt werden de goedkopere elementen en oncatalogiseerbare delen aangeboden van de wetenschappelijke bibliotheken die Brill regelmatig inkoop. Het streven is altijd geweest om een ruime sortering van boeken te hebben die één gulden kosten, met daarnaast een groot aanbod van boeken van gemiddeld vijf gulden.

Op zaterdag 1 december 1984 zal de laatste boekenmarkt gehouden worden. Naast een flink nieuw aanbod zullen oude voorraden zeer laag geprijsd de deur uitgaan.

Met ingang van januari 1985 zal er echter in de kelder een permanente boekenmarkt zijn, die volgens dezelfde principes werkt: goedkope boeken op de gebieden theologie, klassieke oudheid, biologie, Europese talen en culturen en (ons specialisme) oosterse talen en culturen.

Openingstijd is dinsdag t/m vrijdag van 08.30-12.30 en 13.30-17.00 uur.